

**Estatat**






# Municipal

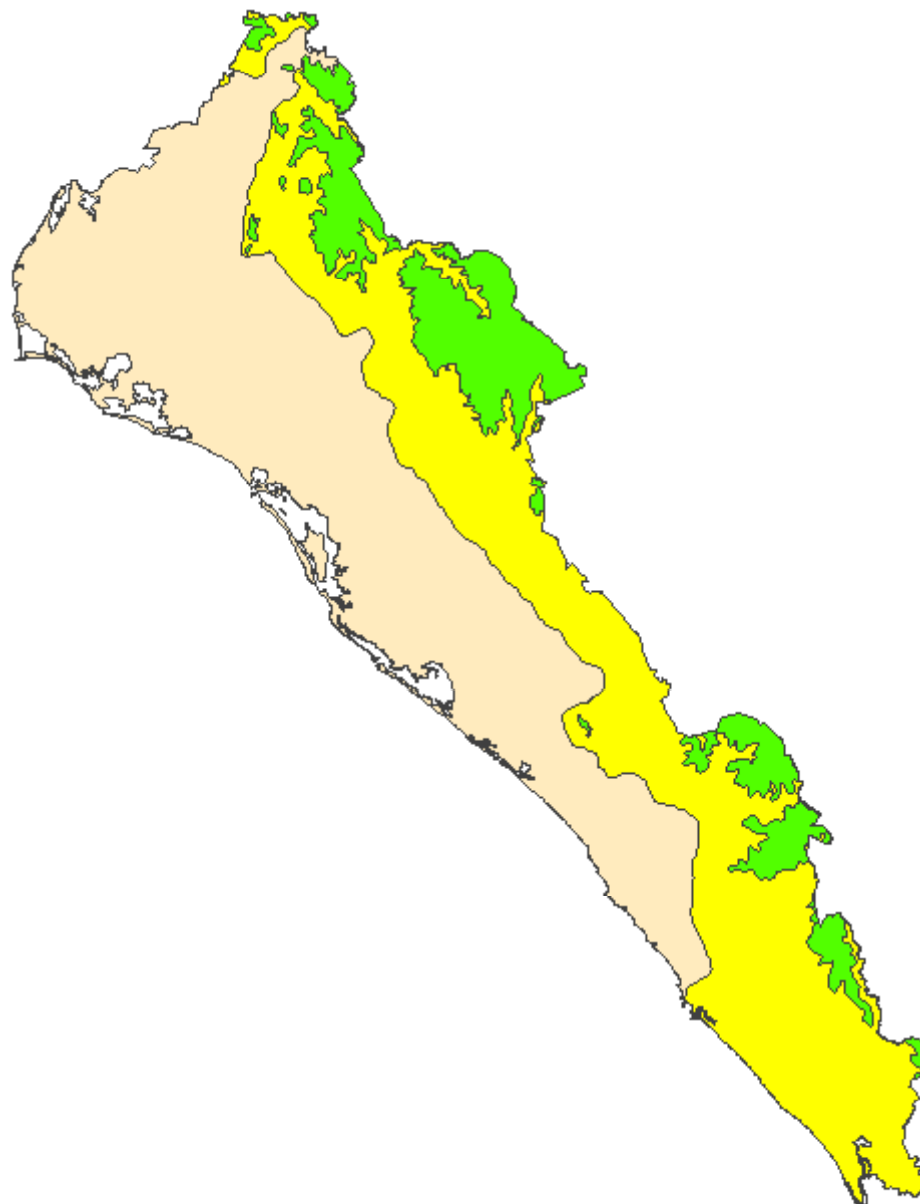


**Limites Estatales**

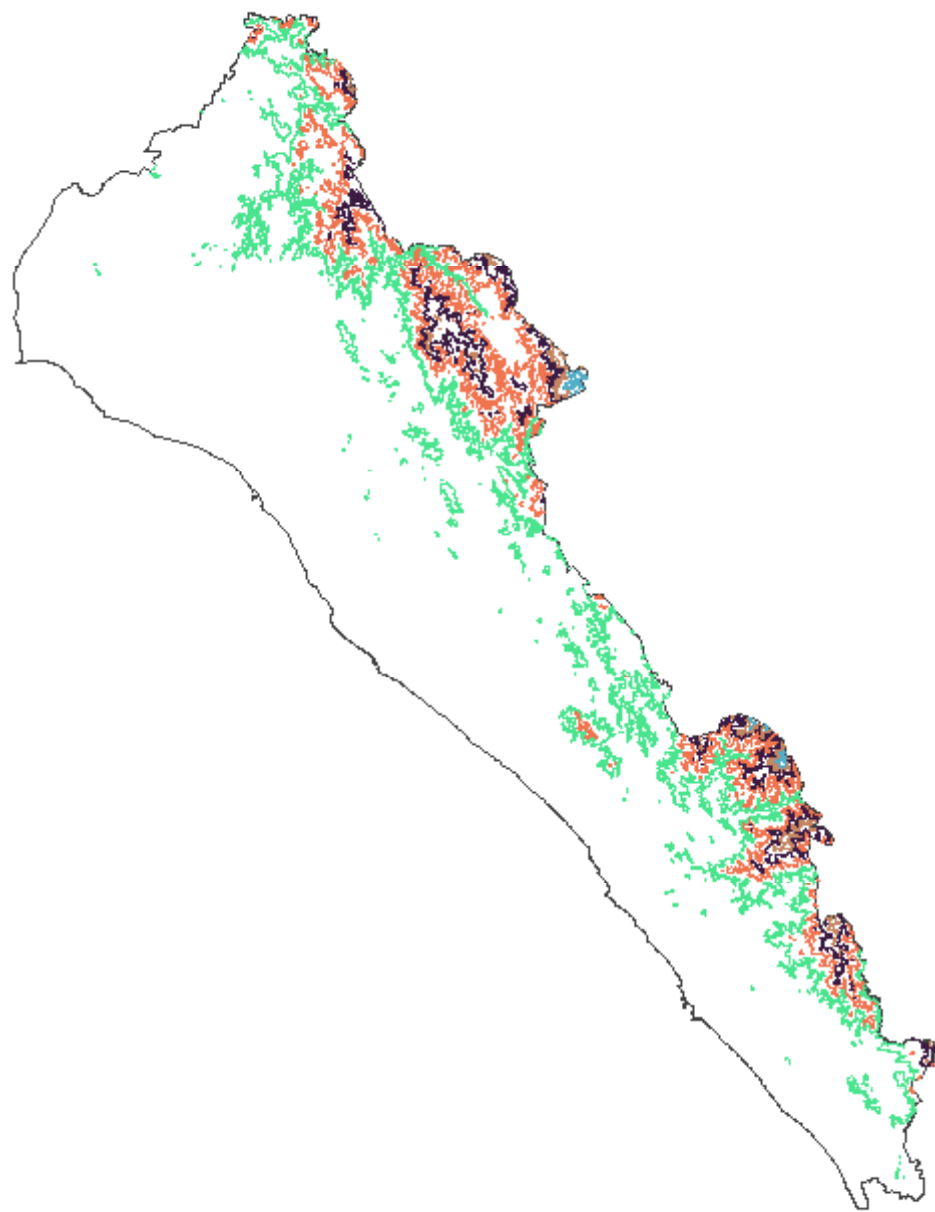
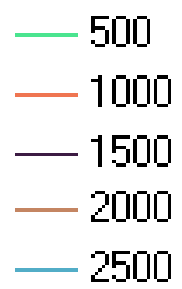


## Clima

-  Clima calido
-  Clima seco
-  Clima templado

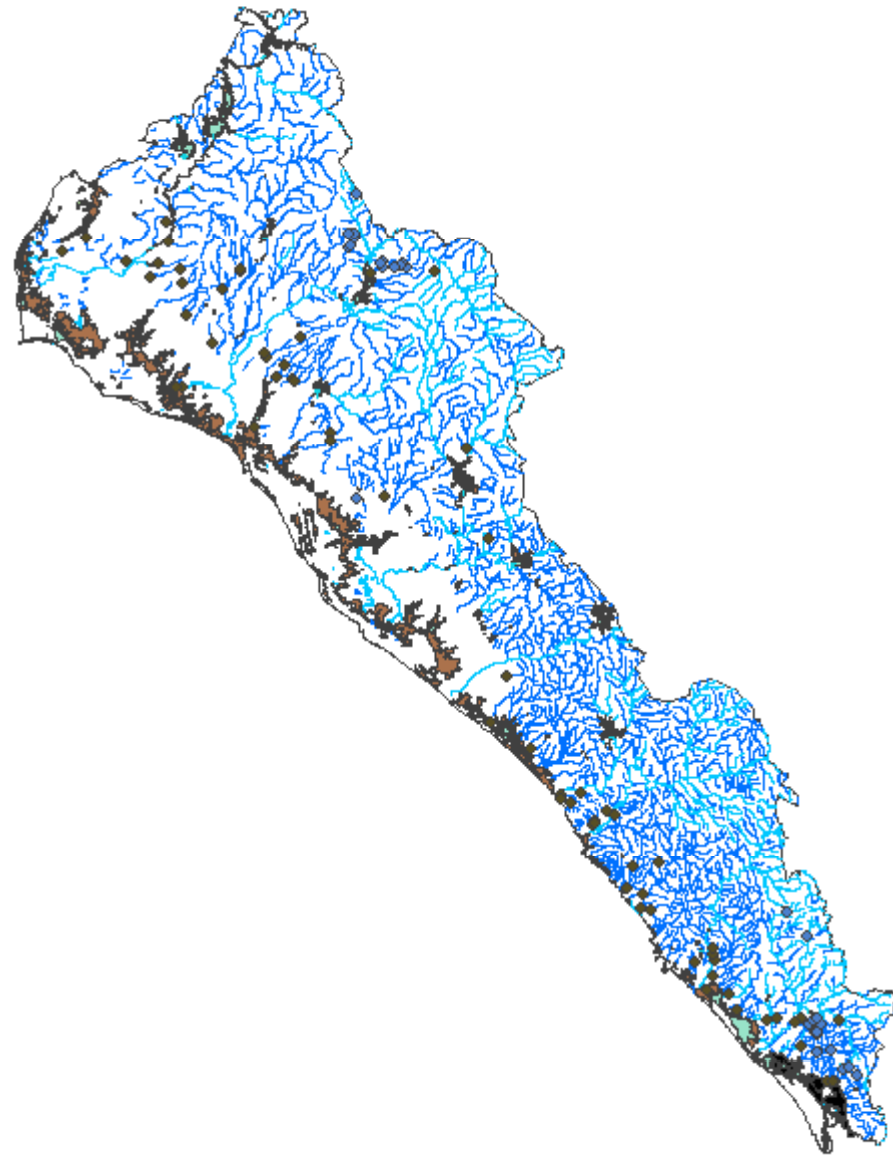


## Curvas de Nivel






## Hidrografía

- intermitente
- perenne
- cuerpo de agua intermitente
- cuerpo de agua perenne
- pantano
- terreno sujeto a inundación
- corriente que desaparece
- manantial-p
- presa-l



## Uso de suelo y vegetación

-  Bosque encino-pino
-  Palmar
-  popal



Distritos  
Electoraes

