

Estatat






Municipal

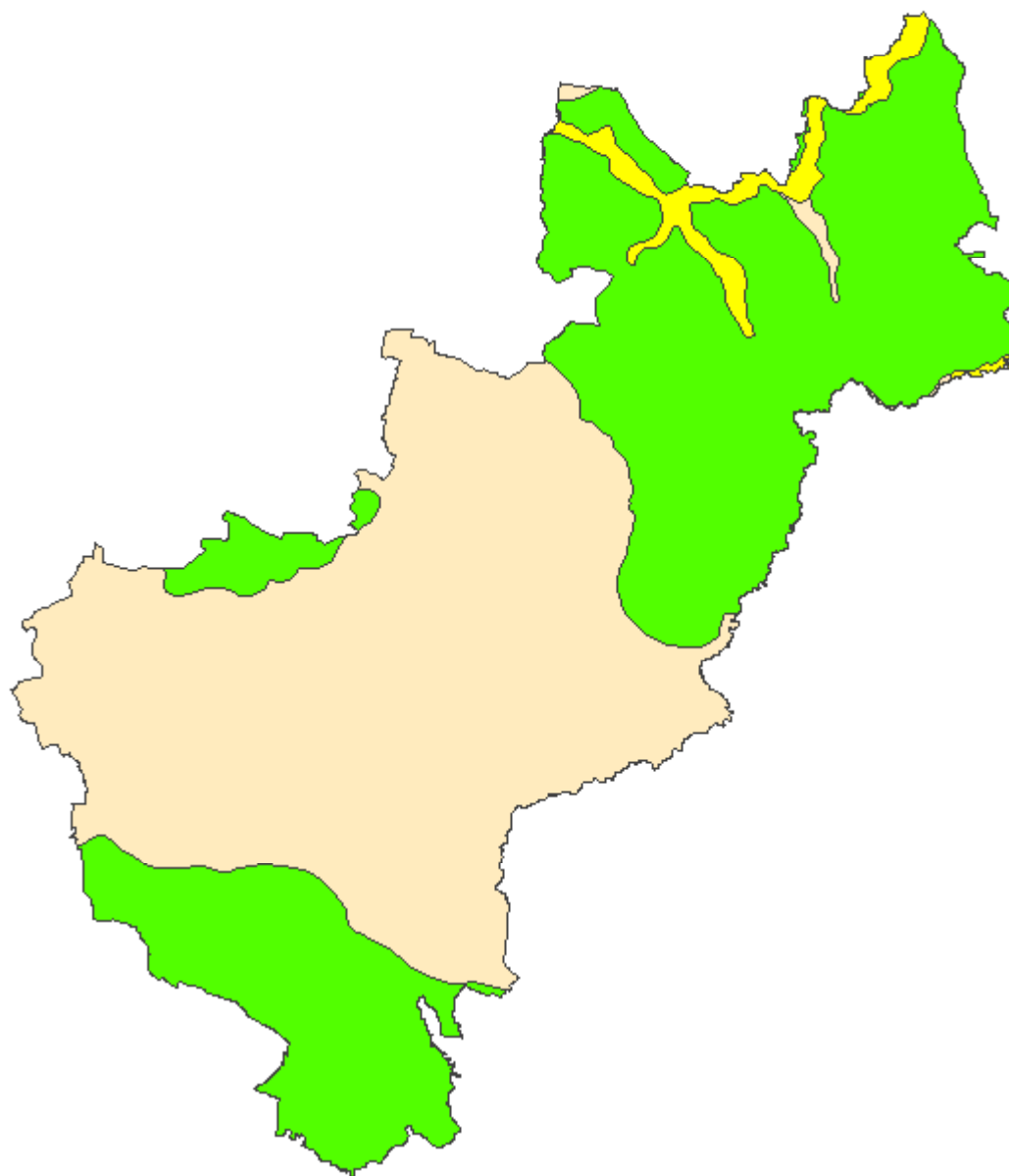


Limites estatales



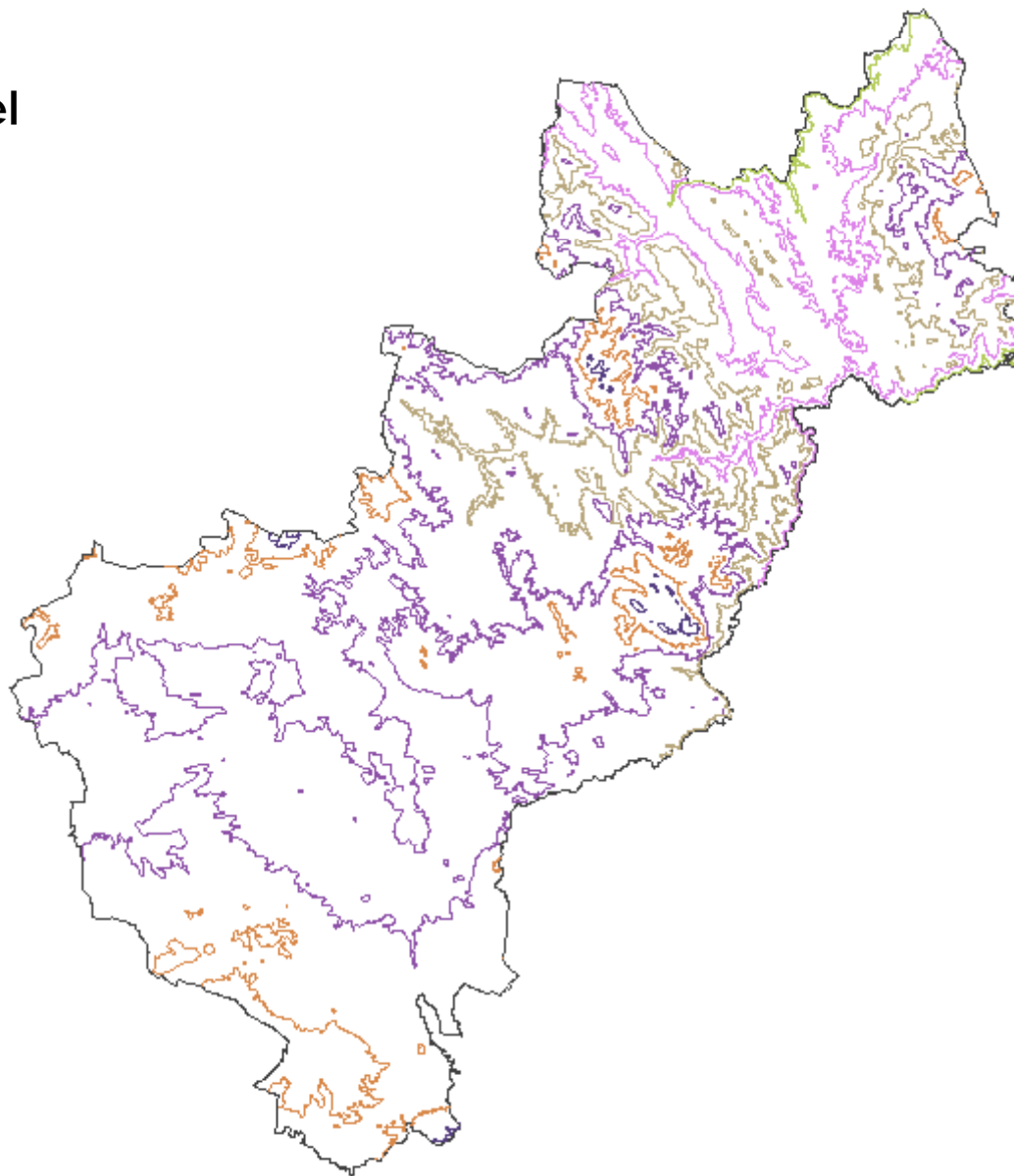
Clima

-  clima calido
-  Clima seco
-  Clima tempaldo



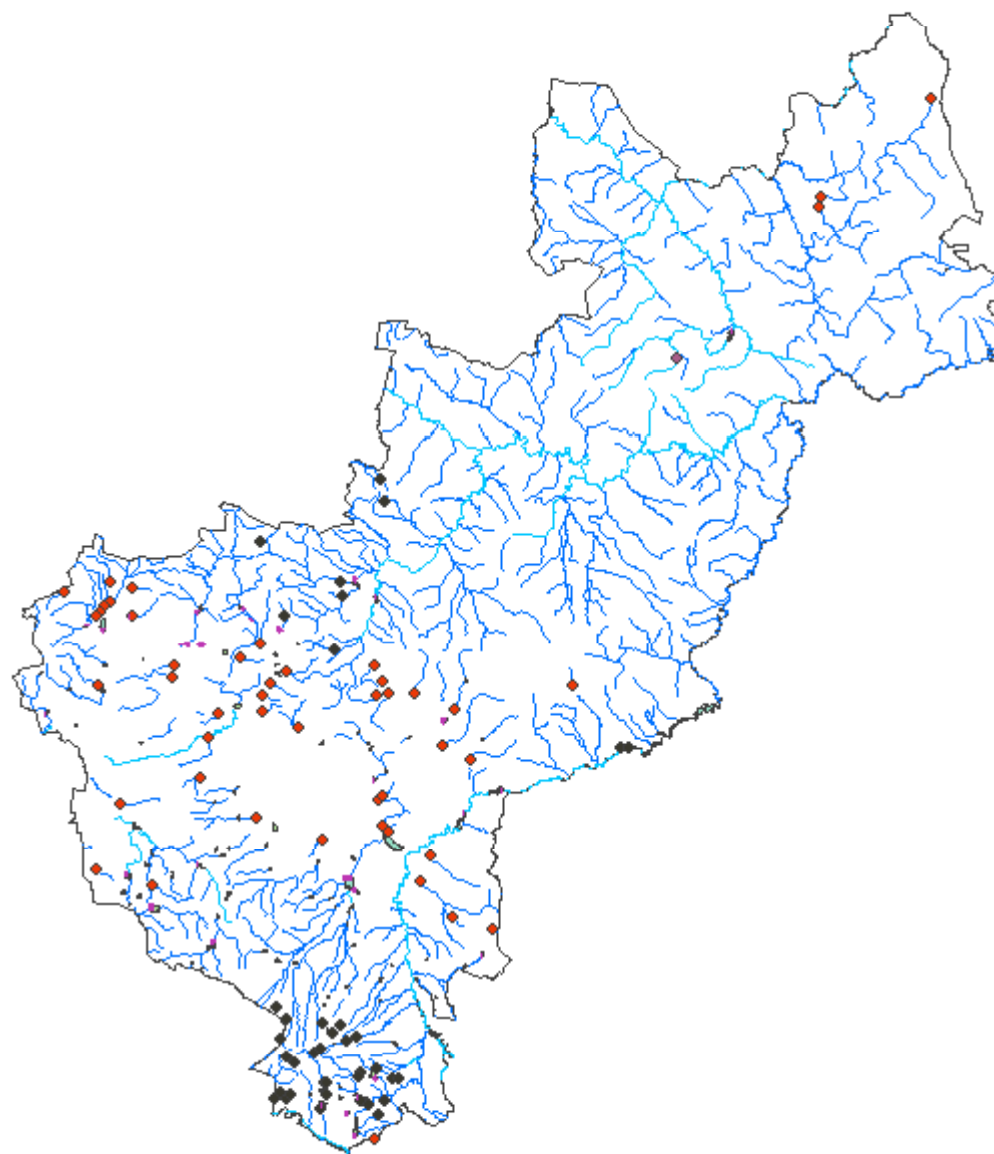
Curvas de Nivel

- 500
- 1000
- 1500
- 2000
- 2500
- 3000








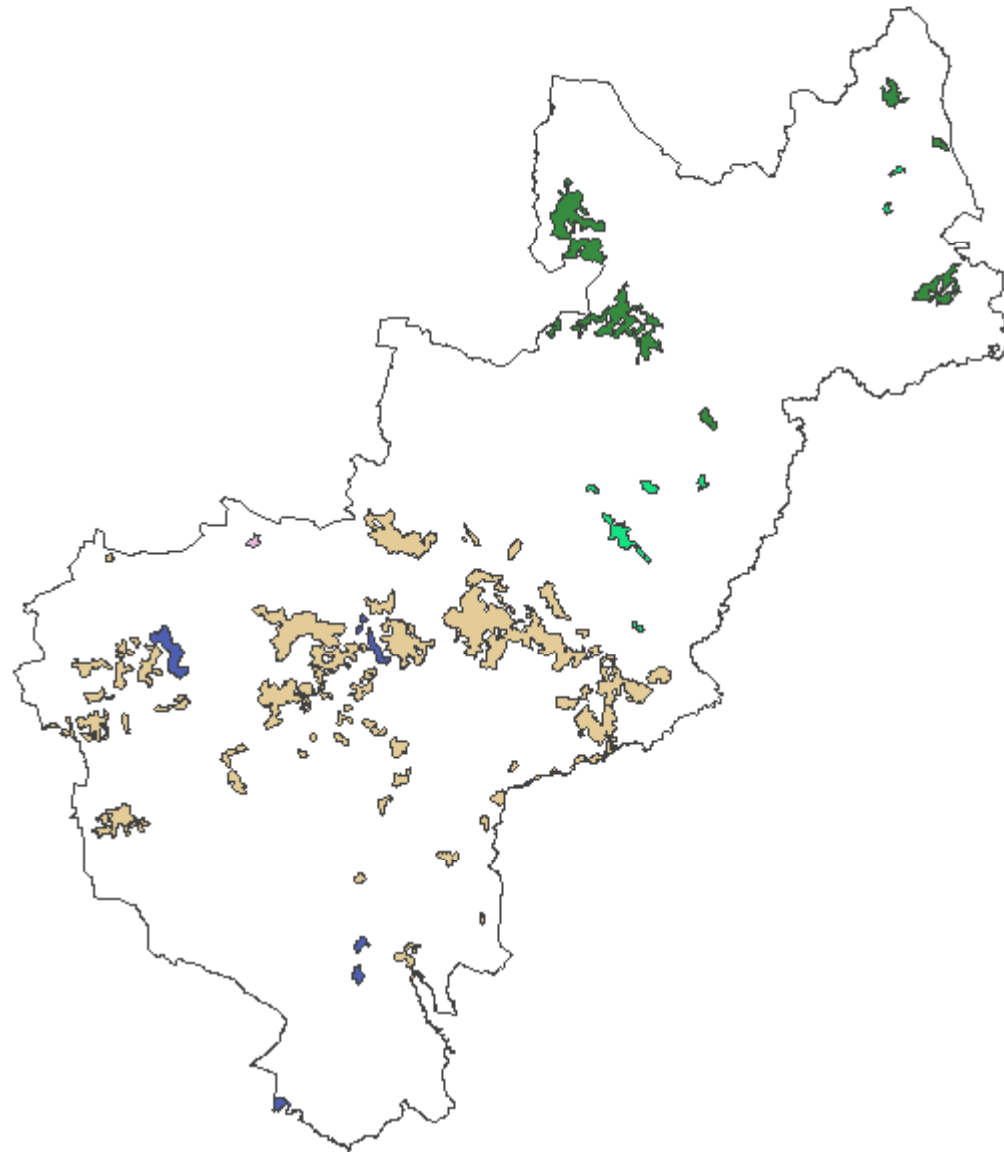
Hidrografía

- intermitente
- perenne
- cuerpo de agua intermitente
- cuerpo de agua perenne
- corriente que desaparece
- manantial-p
- presa-l
- salto de agua-p



Uso de suelo y vegetación

-  Agricultura de Riego Eventual
-  Bosque cultivado
-  Bosque encino-pino
-  Bosque Táscate
-  Matorral subinerme



Distritos Electorales

