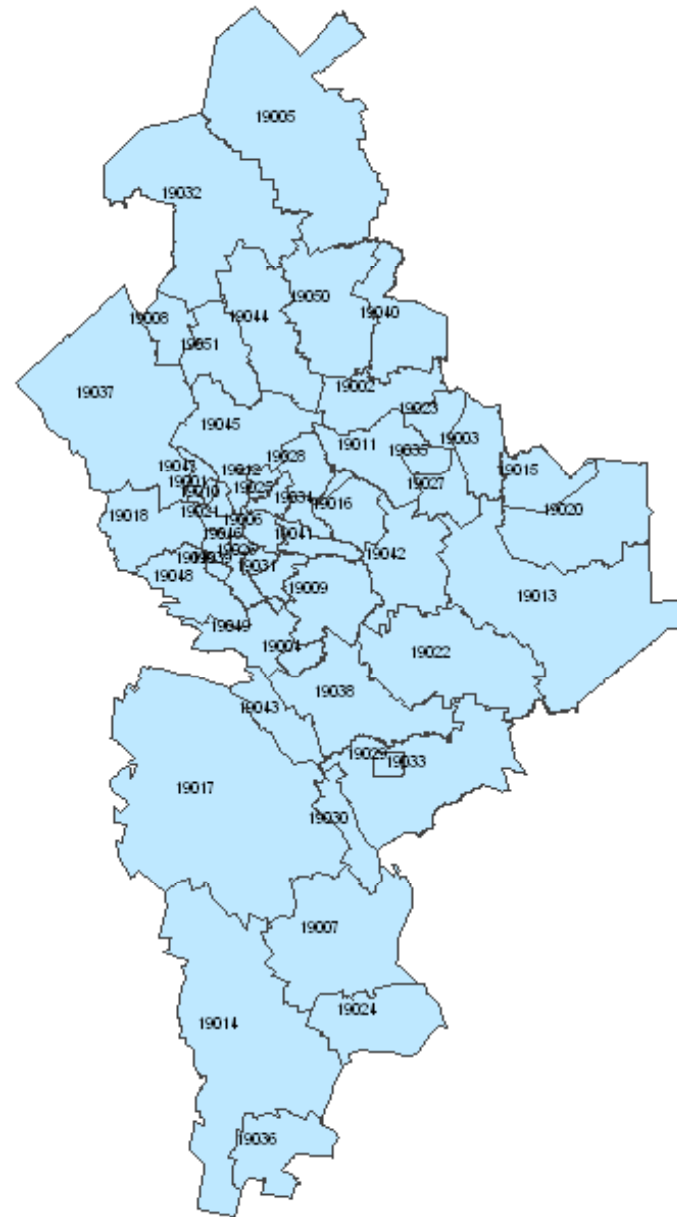


Estatal



Municipal





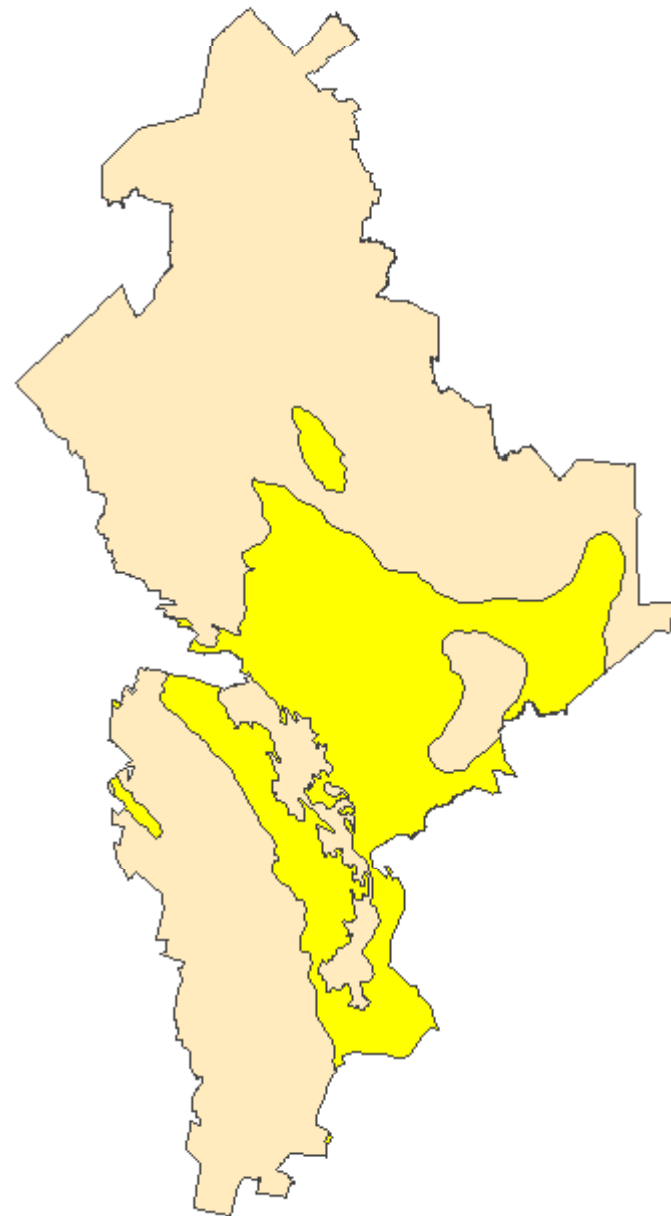
CLAVE	NOMBRE DEL MUNICIPIO
19001	Abasolo
19002	Agualeguas
19003	Los Aldamas
19004	Allende
19005	Anáhuac
19006	Apodaca
19007	Aramberri
19008	Bustamante
19009	Cadereyta Jiménez
19010	Carmen
19011	Cerralvo
19012	Ciénega de Flores
19013	China
19014	Dr. Arroyo
19015	Dr. Coss
19016	Dr. González
19017	Galeana
19018	García
19019	San Pedro Garza García
19020	Gral. Bravo
19021	Gral. Escobedo
19022	Gral. Terán
19023	Gral. Treviño
19024	Gral. Zaragoza
19025	Gral. Zuazua
19026	Guadalupe
19027	Los Herreras
19028	Higueras
19029	Hualahuises
19030	Iturbide
19031	Juárez
19032	Lampazos de Naranjo
19033	Linares
19034	Marín
19035	Melchor Ocampo
19036	Mier y Noriega
19037	Mina
19038	Montemorelos
19039	Monterrey
19040	Parás
19041	Pesquería
19042	Los Ramones
19043	Rayones
19044	Sabinas Hidalgo
19045	Salinas Victoria
19046	San Nicolás de los Garza
19047	Hidalgo
19048	Santa Catarina
19049	Santiago
19050	Vallecillo
19051	Villaldama

Limites Estatales

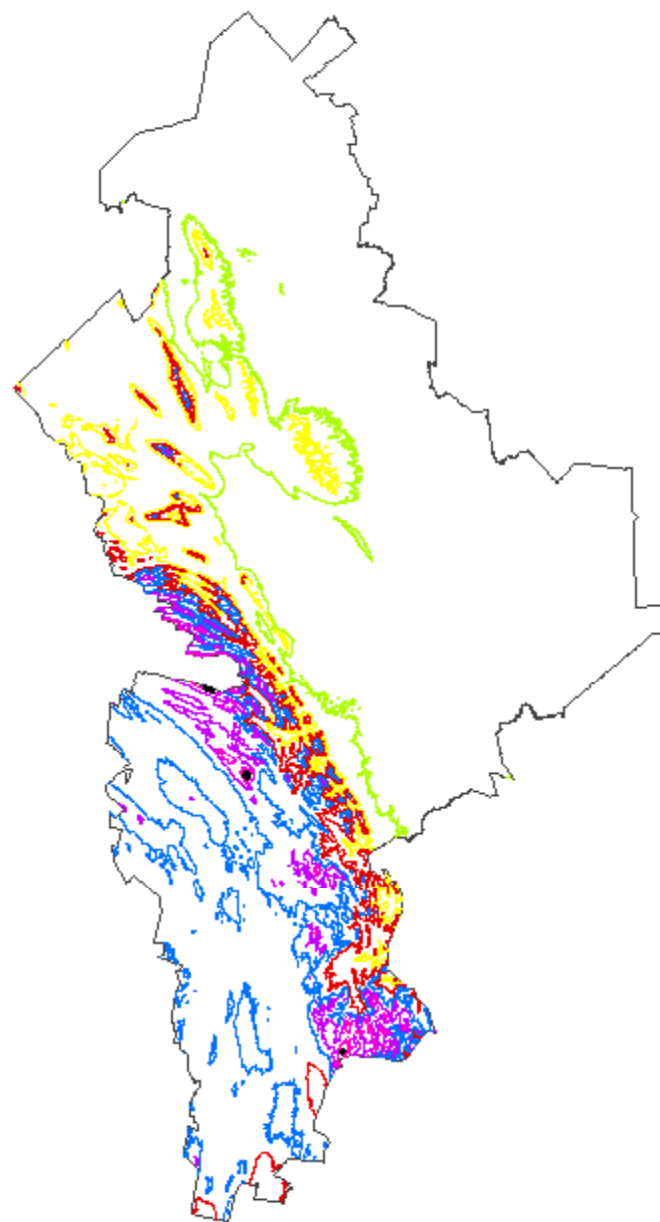
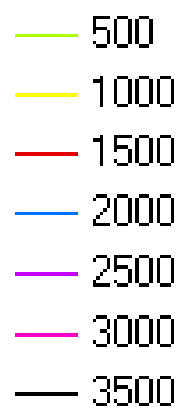


Clima











-  Clima Seco
-  Clima Templado

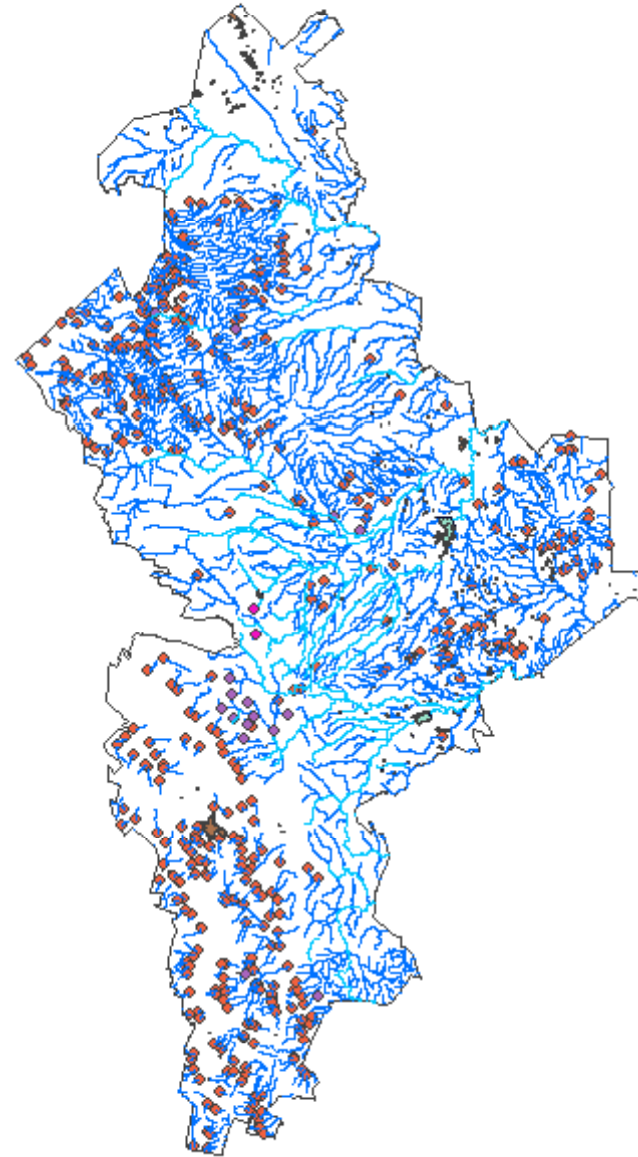


Curvas de Nivel






Hidrografía

-  Corriente que desaparece
-  cuerpo de agua intermitente
-  cuerpo de agua perenne
-  Intermitente
-  manantial-p
-  pantano
-  perenne
-  presa-l
-  Salto de agua-p
-  Terreno sujeto a inundación



Uso de suelo y vegetación

-  Agricultura de riego eventual
-  Bosque Táscate
-  Pastizal Gipsófilo



Distritos Electorales

