

Estatal

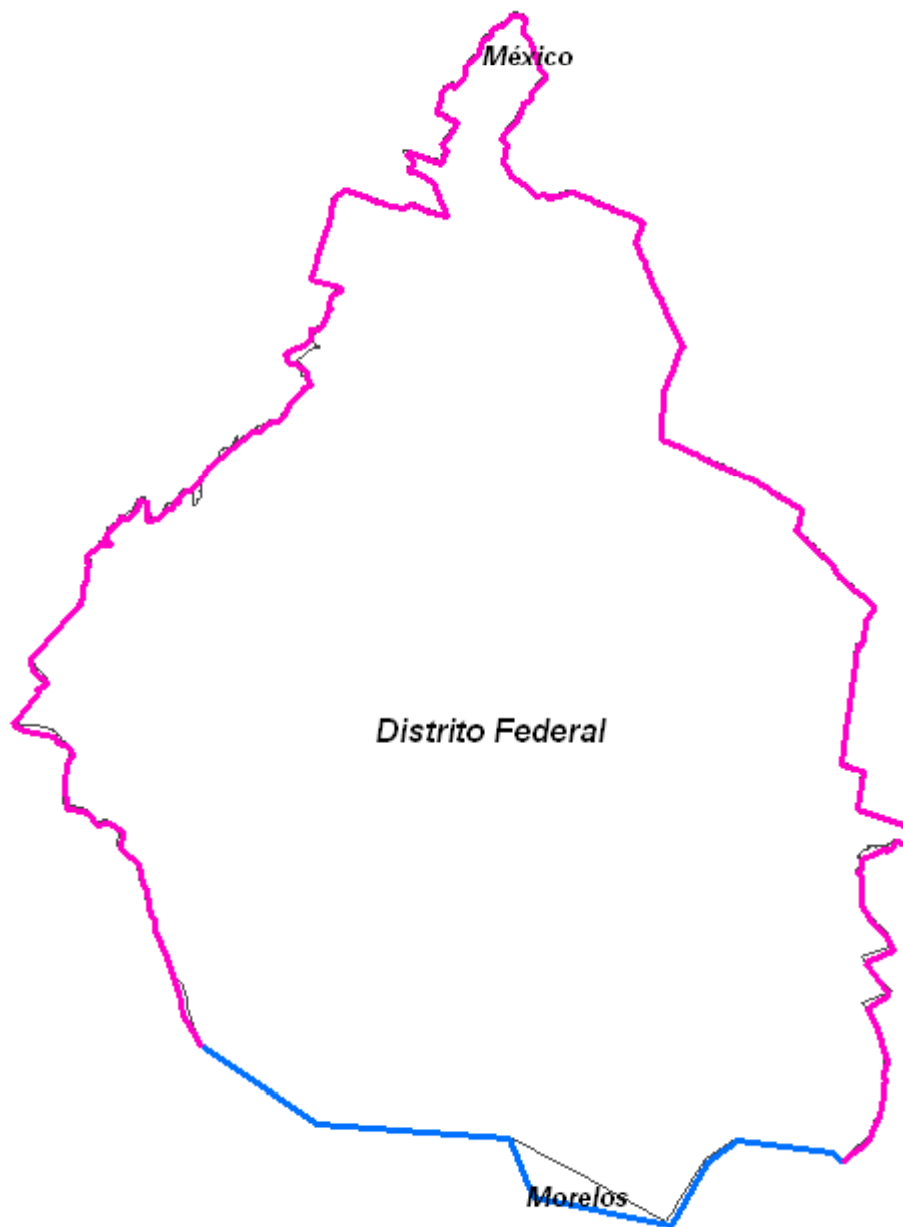


Distrito Federal



Municipal

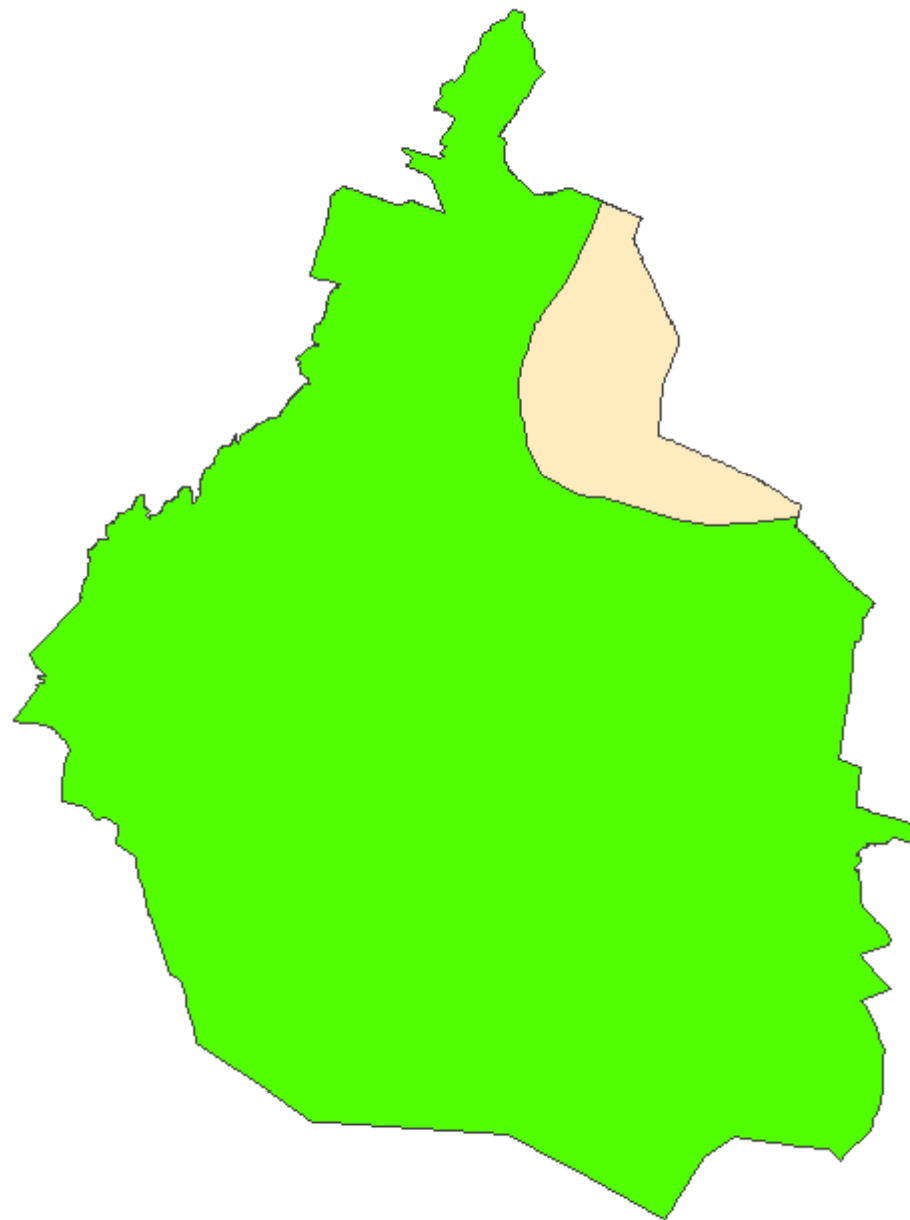


Limites Estatales

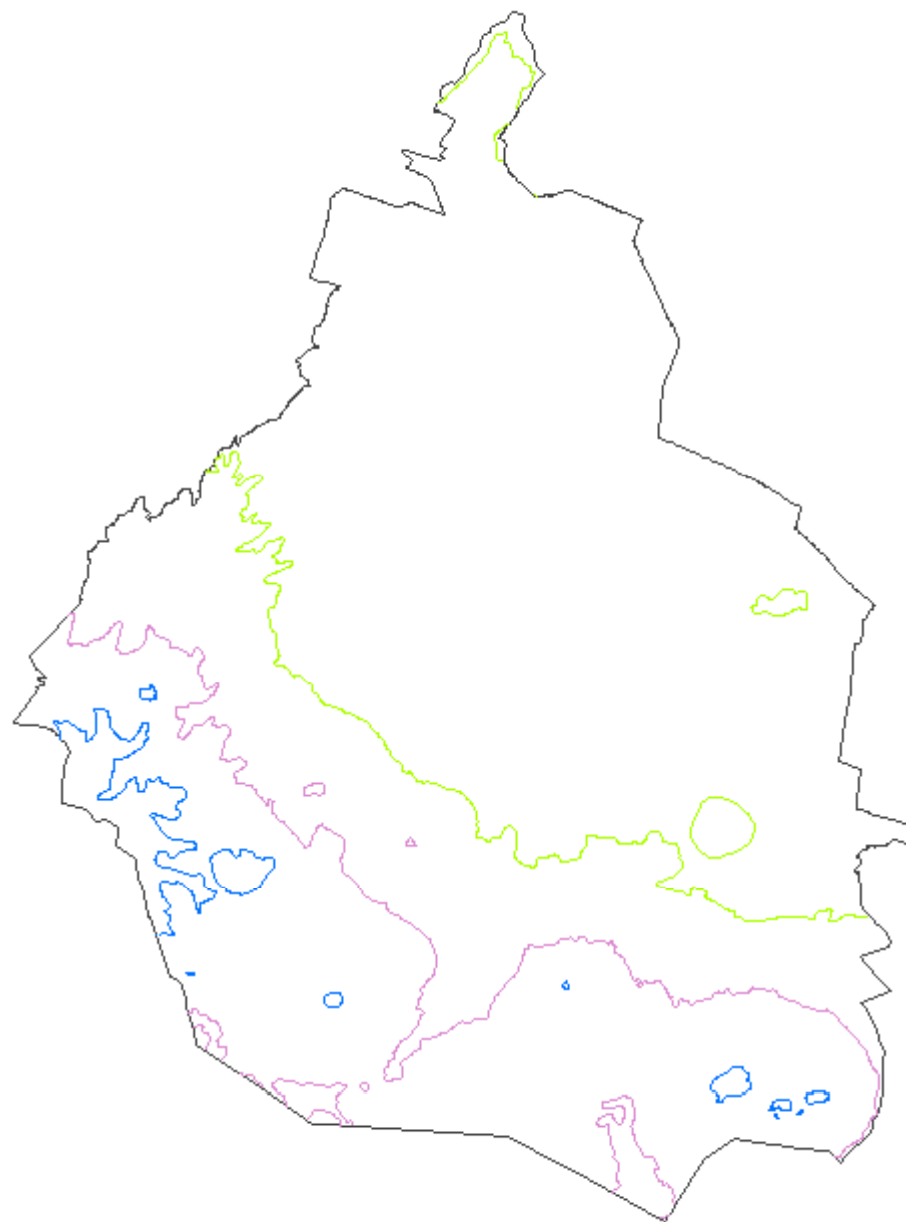


Clima

-  clima seco
-  clima templado

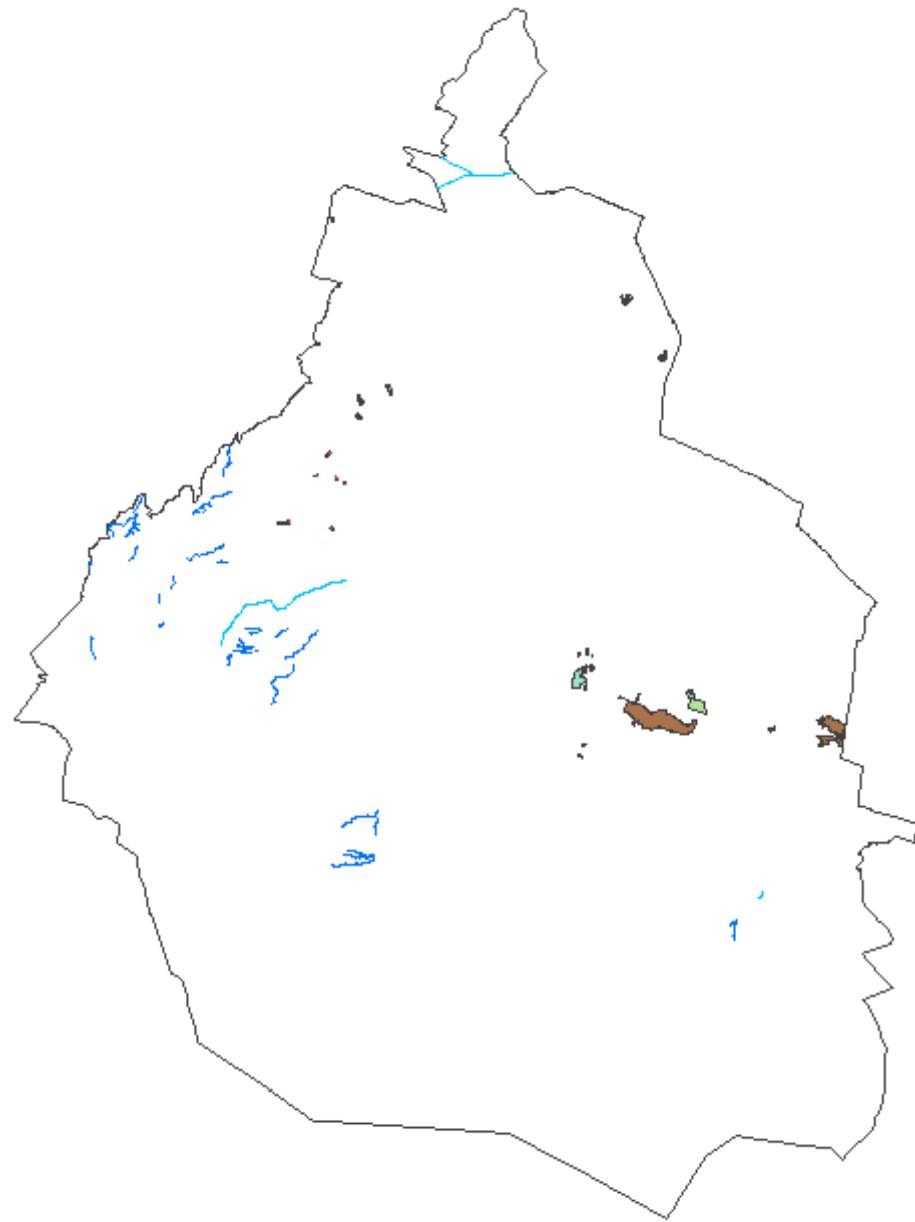


Curvas de Nivel






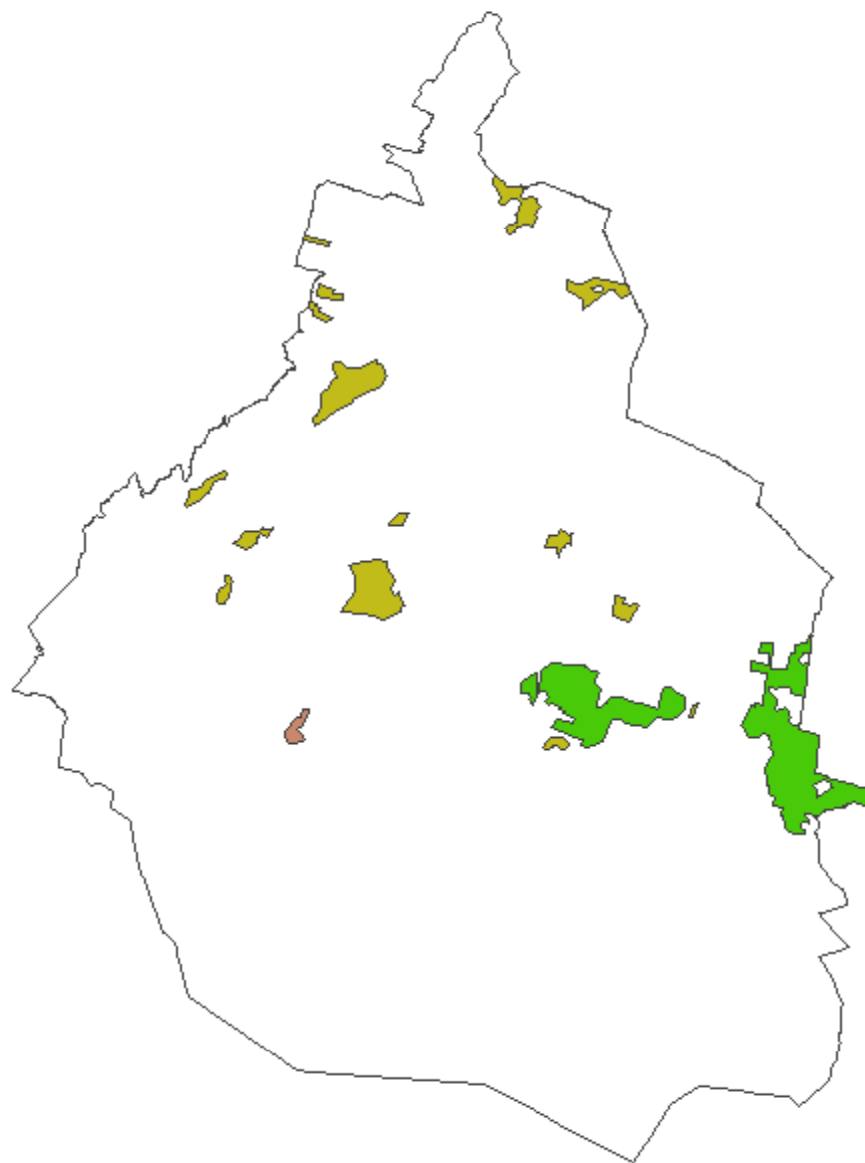
Hidrografía

- intermitente
- perenne
- cuerpo de agua intermitente
- cuerpo de agua perenne
- terreno sujeto a inundación
- presa-l



Uso de suelo y vegetación

-  agricultura de riego eventual
-  Bosque cultivado
-  Bosque de encino-pino



Distritos Electorales

