

Estatal

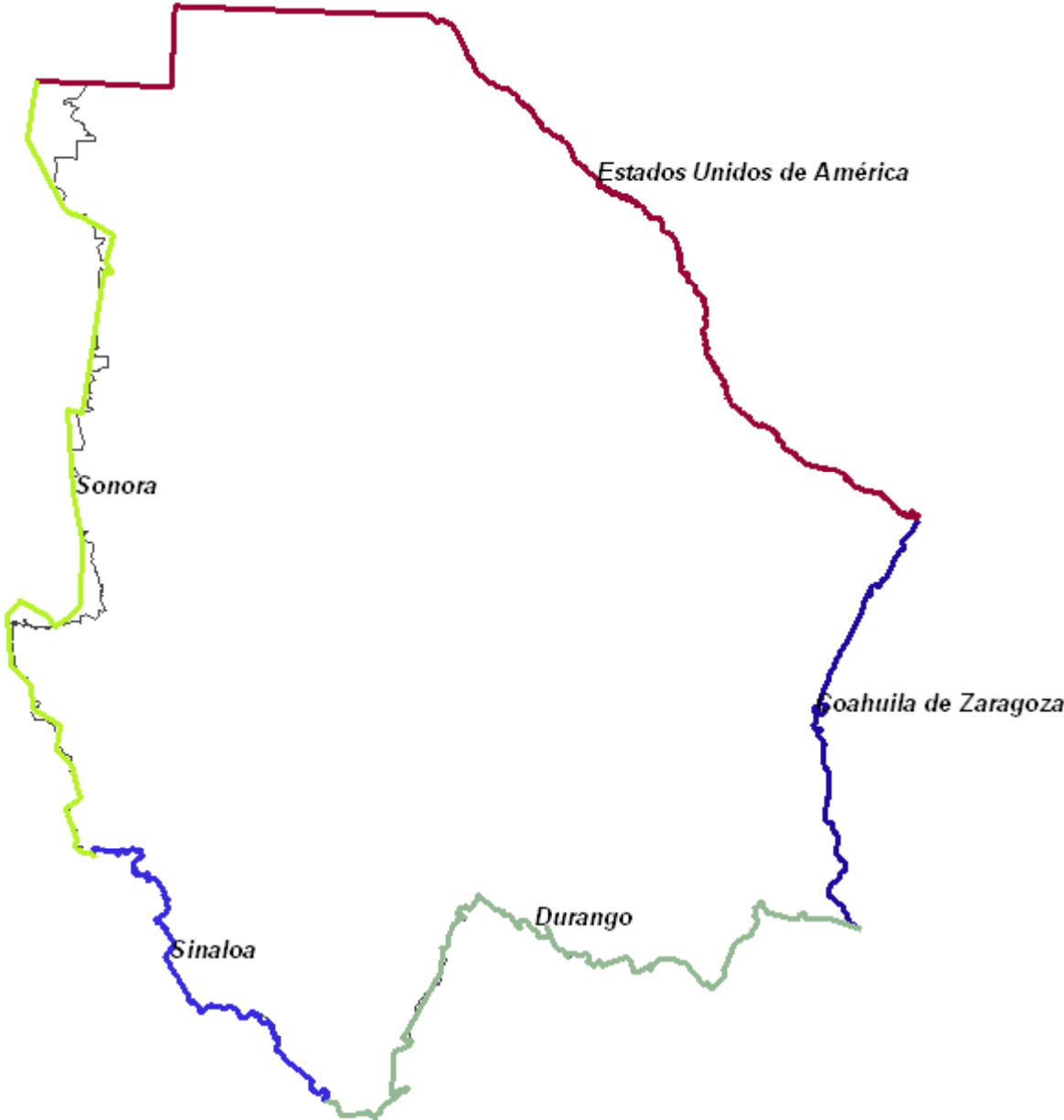


**Chihuahua**




# Municipal

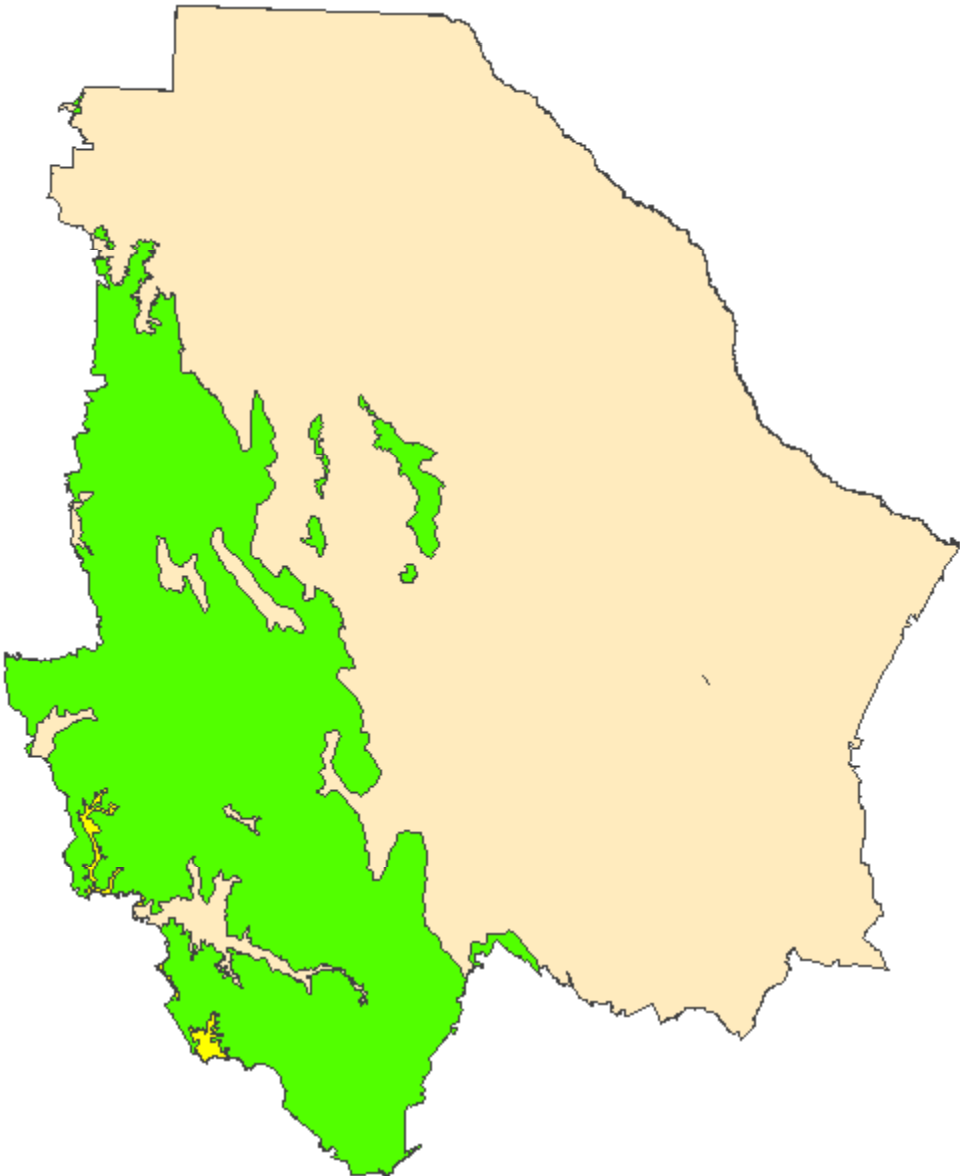


# Limites Estatales



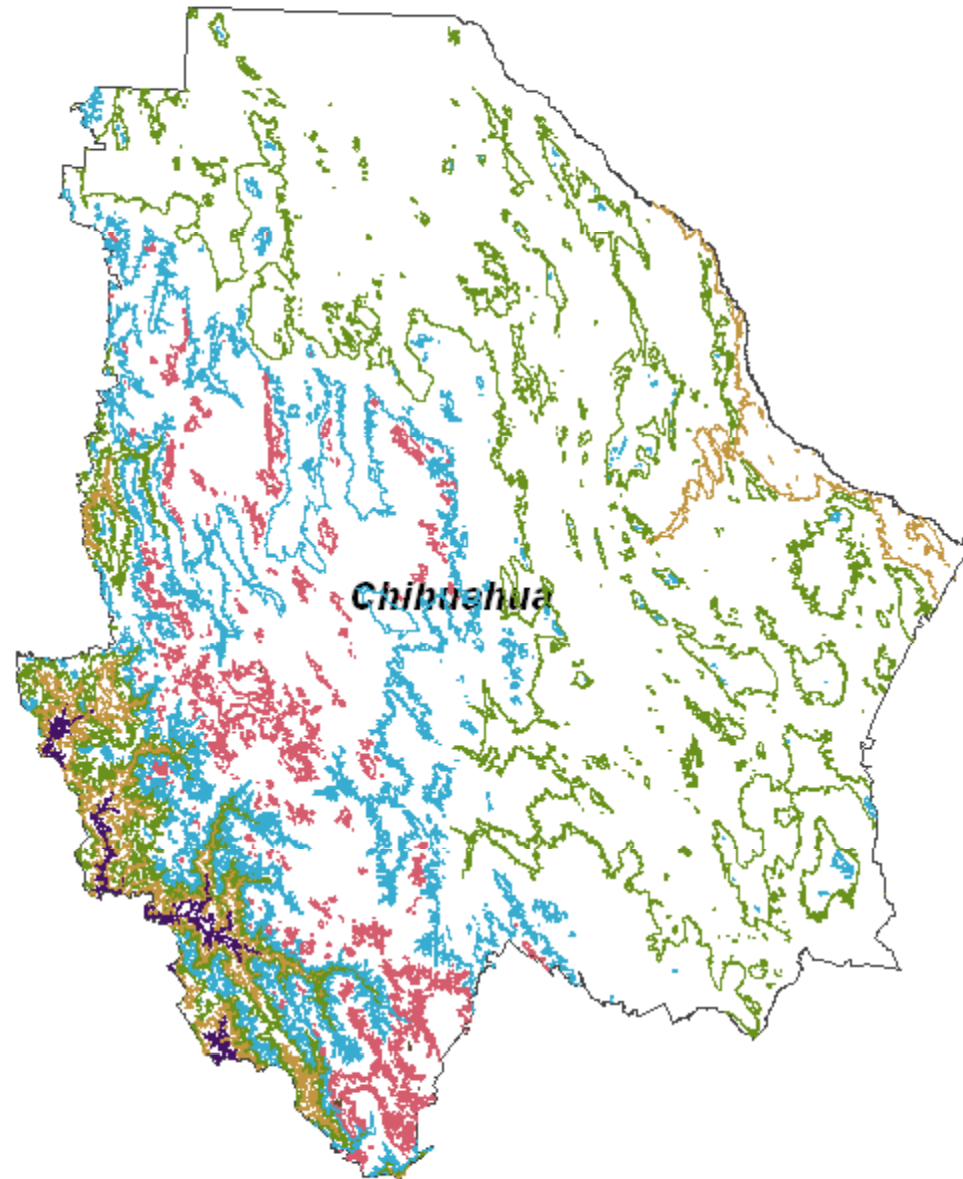
Climas

-  Clima calido
-  Clima seco
-  Clima templado



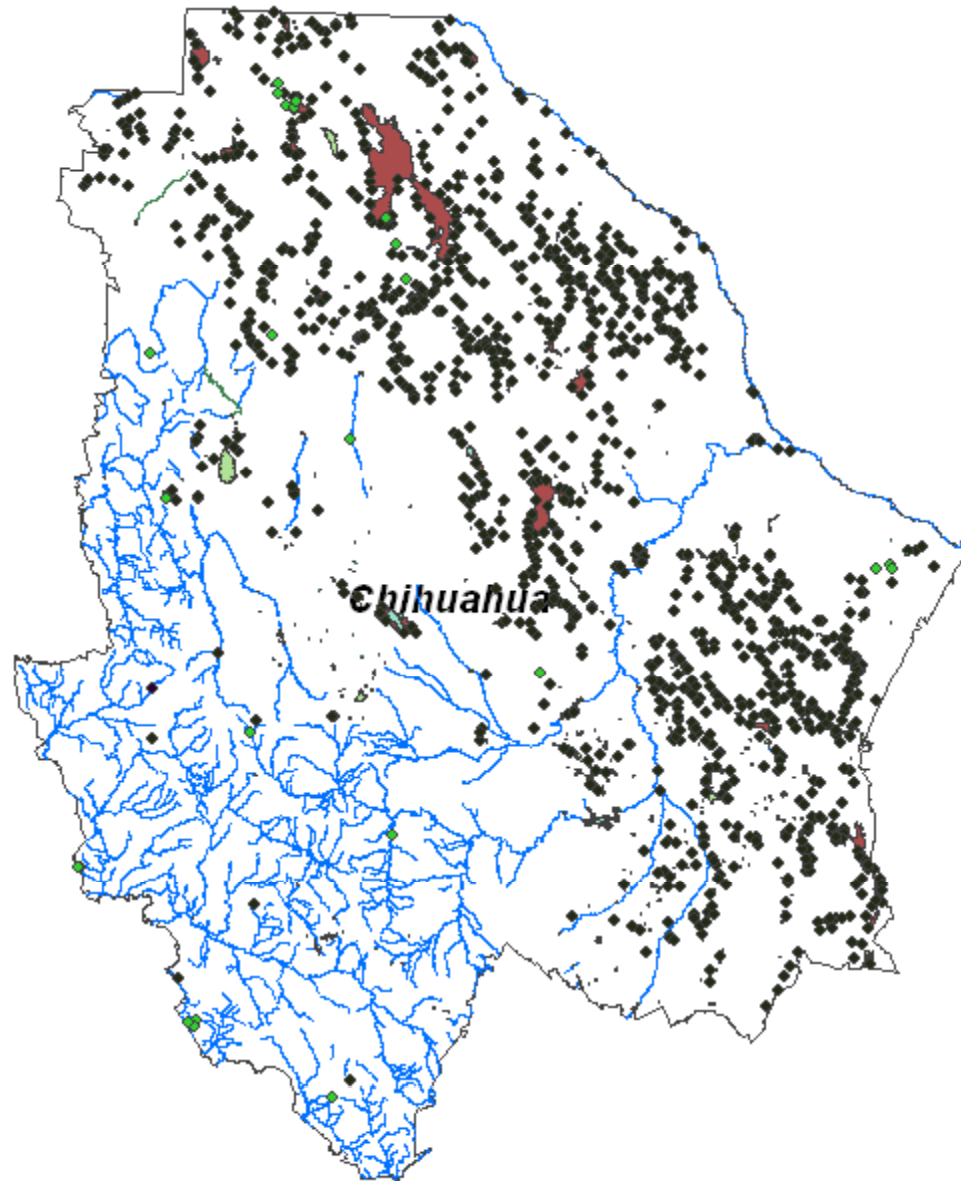
# Curvas de Nivel

- 500
- 1000
- 1500
- 2000
- 2500
- 3000








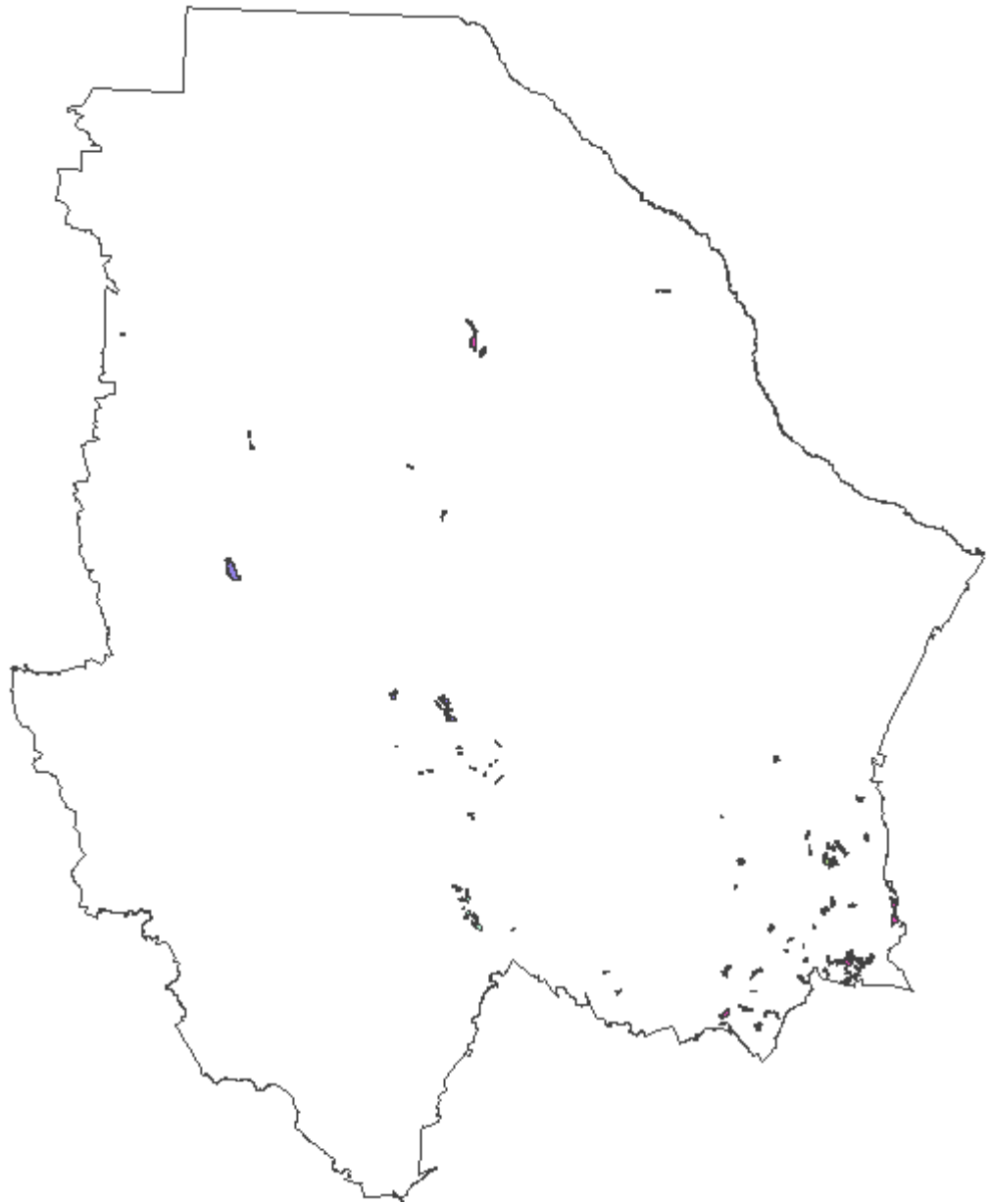
## Hidrografía

- perenne
- terreno sujeto a inundación
- cuerpo de agua intermitente
- cuerpo de agua perenne
- corriente que desaparece
- mamantial-p
- presa-l
- Salto\_de\_agua\_p



## Uso de suelo y vegetación

-  Agricultura de riego eventual
-  Bosque de encino pino
-  Bosque tascate
-  Izotal
-  Vegetación secundaria arbustiva



Distritos  
Electoraes

