

Estatat

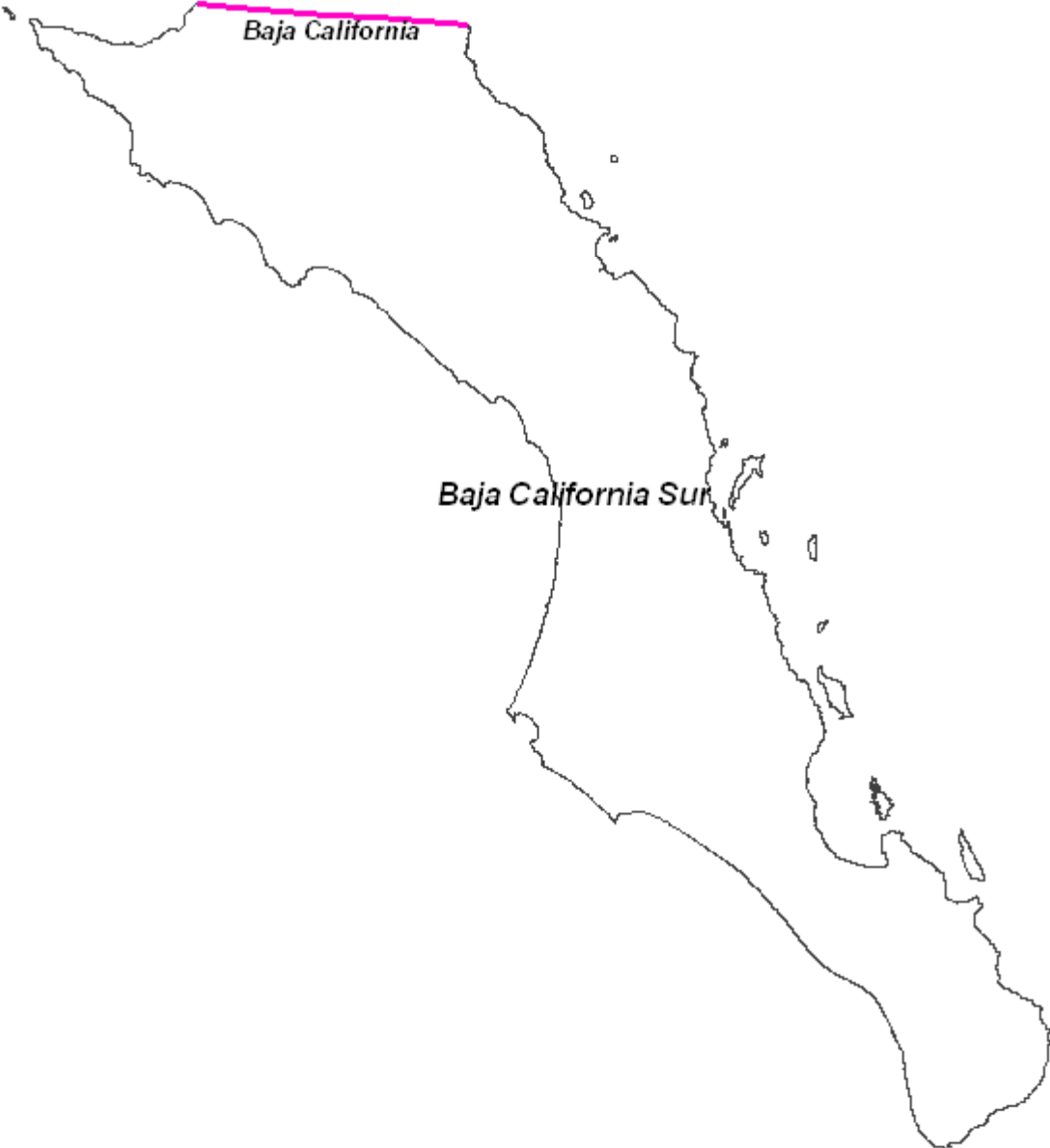


Baja California Sur



Municipal

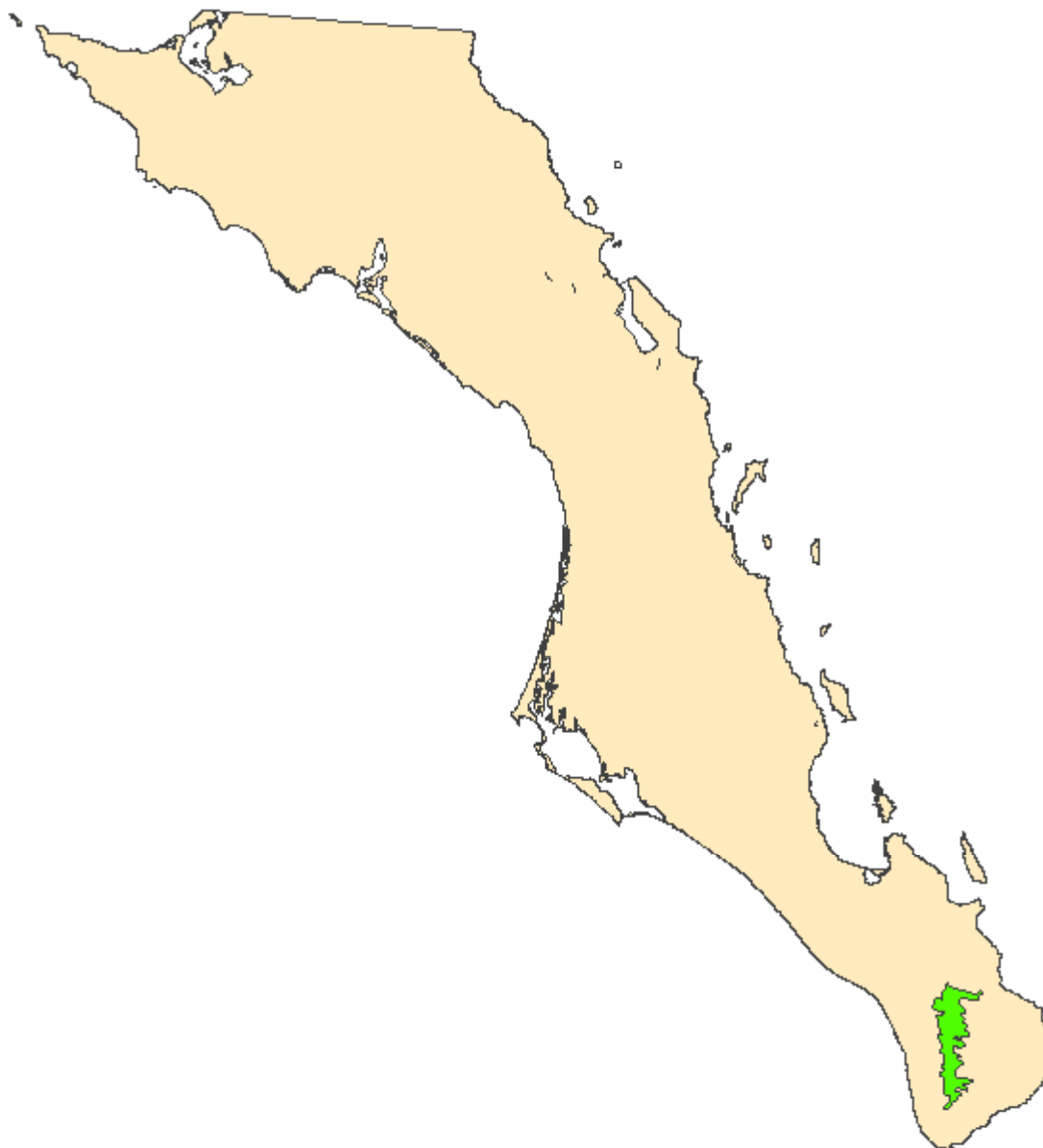


Limites Estatales



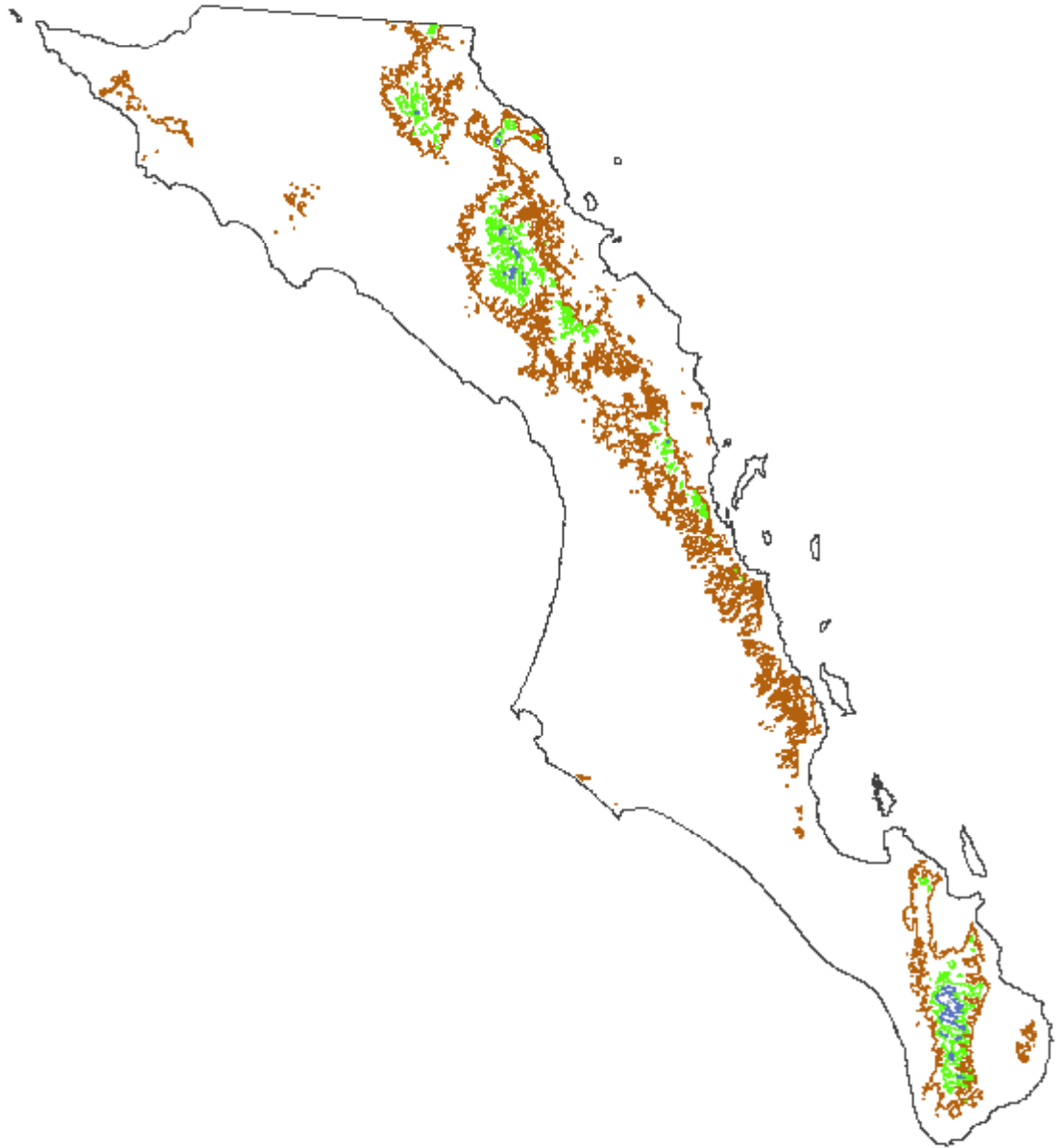
Clima

-  Clima seco
-  Clima templado



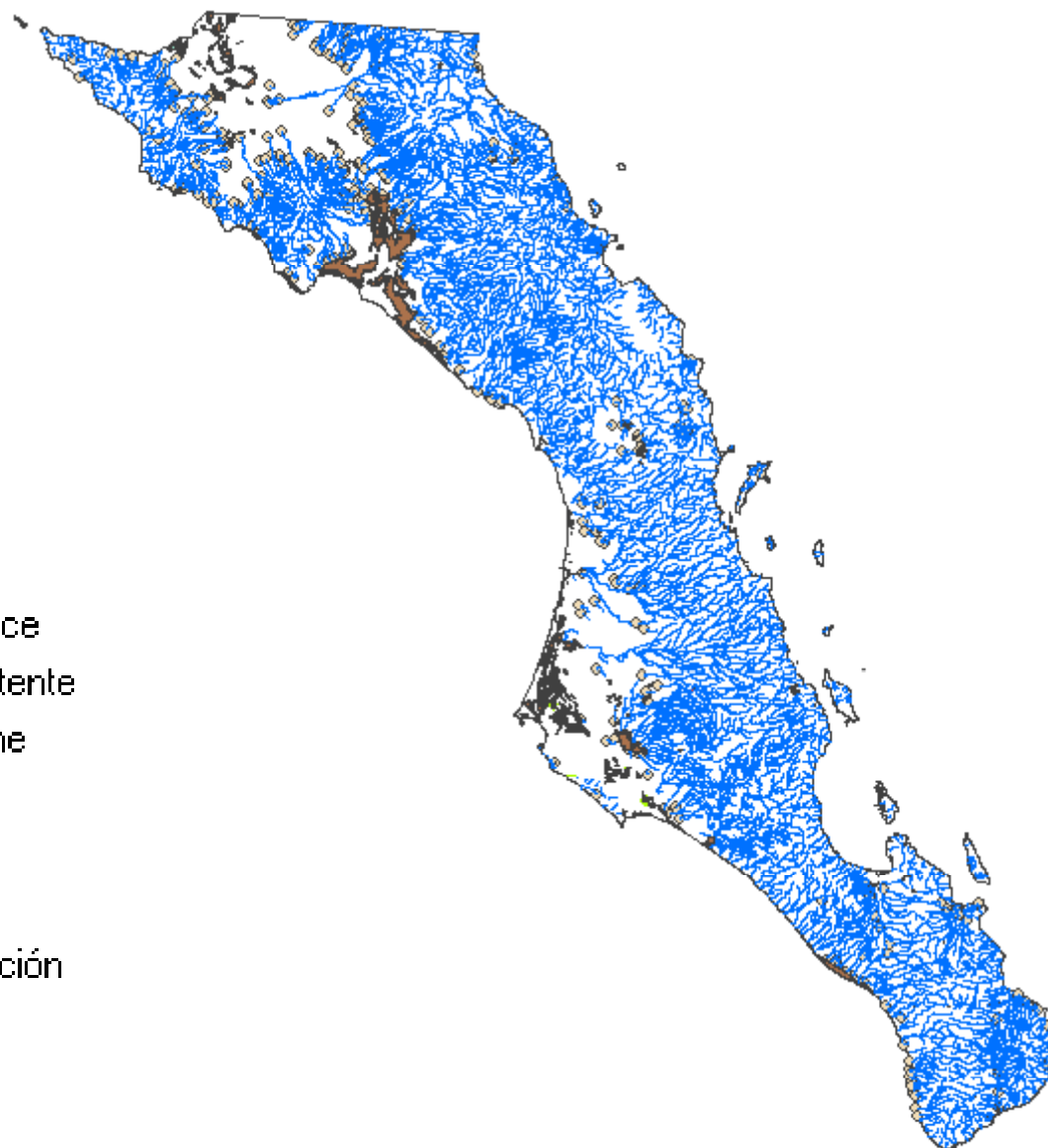
Curvas de Nivel

- 500
- 1000
- 1500
- 2000



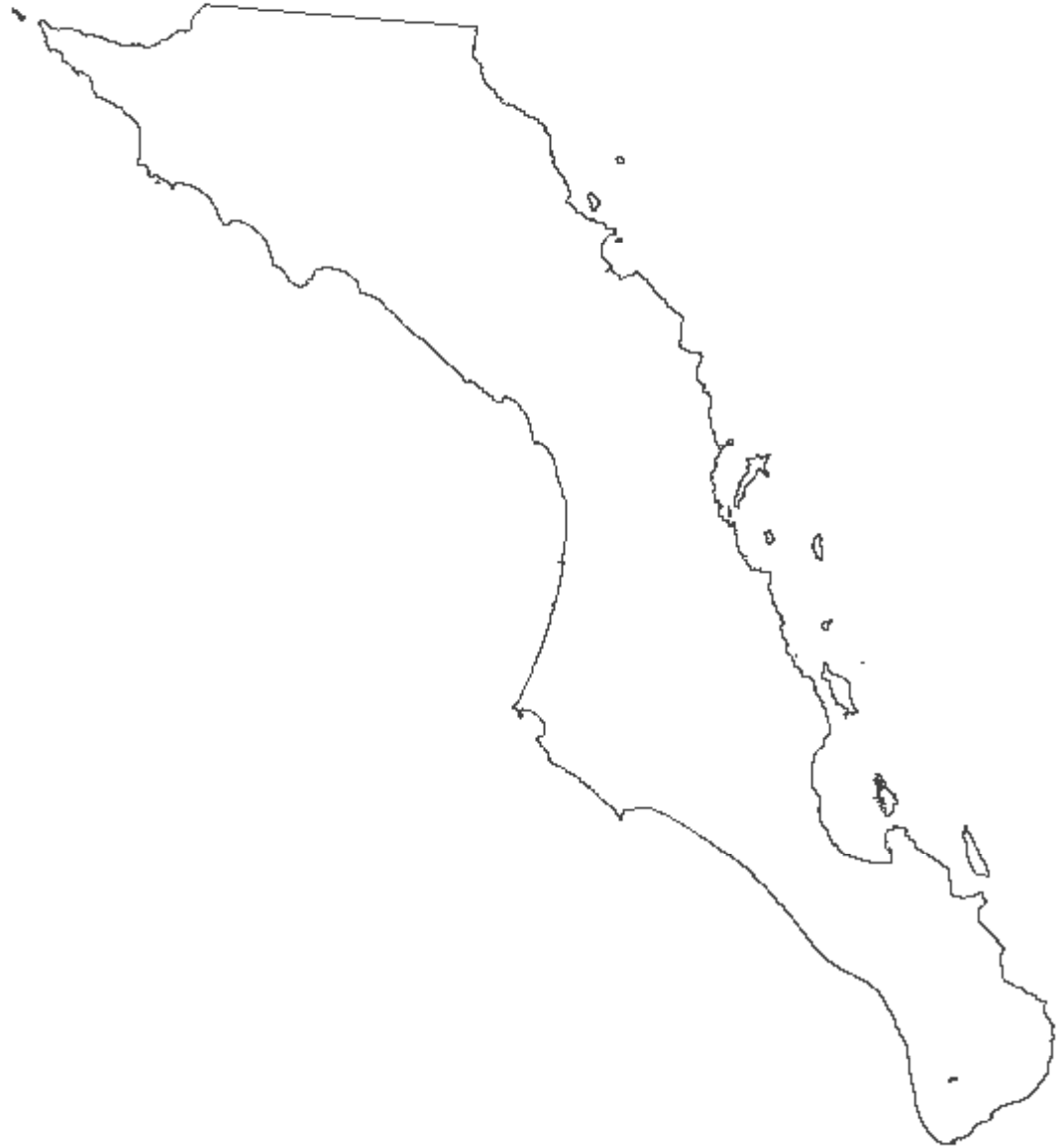
Hidrografía

- corriente que desaparece
- cuerpo de agua intermitente
- cuerpo de agua perenne
- intermitente
- perenne
- presa-l
- terreno sujeto a inundación



Uso de suelo y vegetación

 Palmar



Baja California Sur
Distritos Electorales

