

Folios: 062094 - 062103

Total Fotografias: 10

DOCUMENTO: _____

FOLIOS: 62094 - 62103

FOLIOS FALTANTES: _____

OBSERVACIONES: _____



febrero/68

THIS PAPER
MANUFACTURED
BY KODAK

THIS PAPER
MANUFACTURED
BY KODAK

62094



COMISION ESPECIAL DEL 68

THIS PAPER
MANUFACTURED
BY KODAK

THIS PAPER
MANUFACTURED
BY KODAK

THIS PAPER
MANUFACTURED
BY KODAK

THIS PAPER
MANUFACTURED
BY KODAK

THIS PAPER
MANUFACTURED
BY KODAK

THIS PAPER
MANUFACTURED
BY KODAK

THIS PAPER
MANUFACTURED
BY KODAK

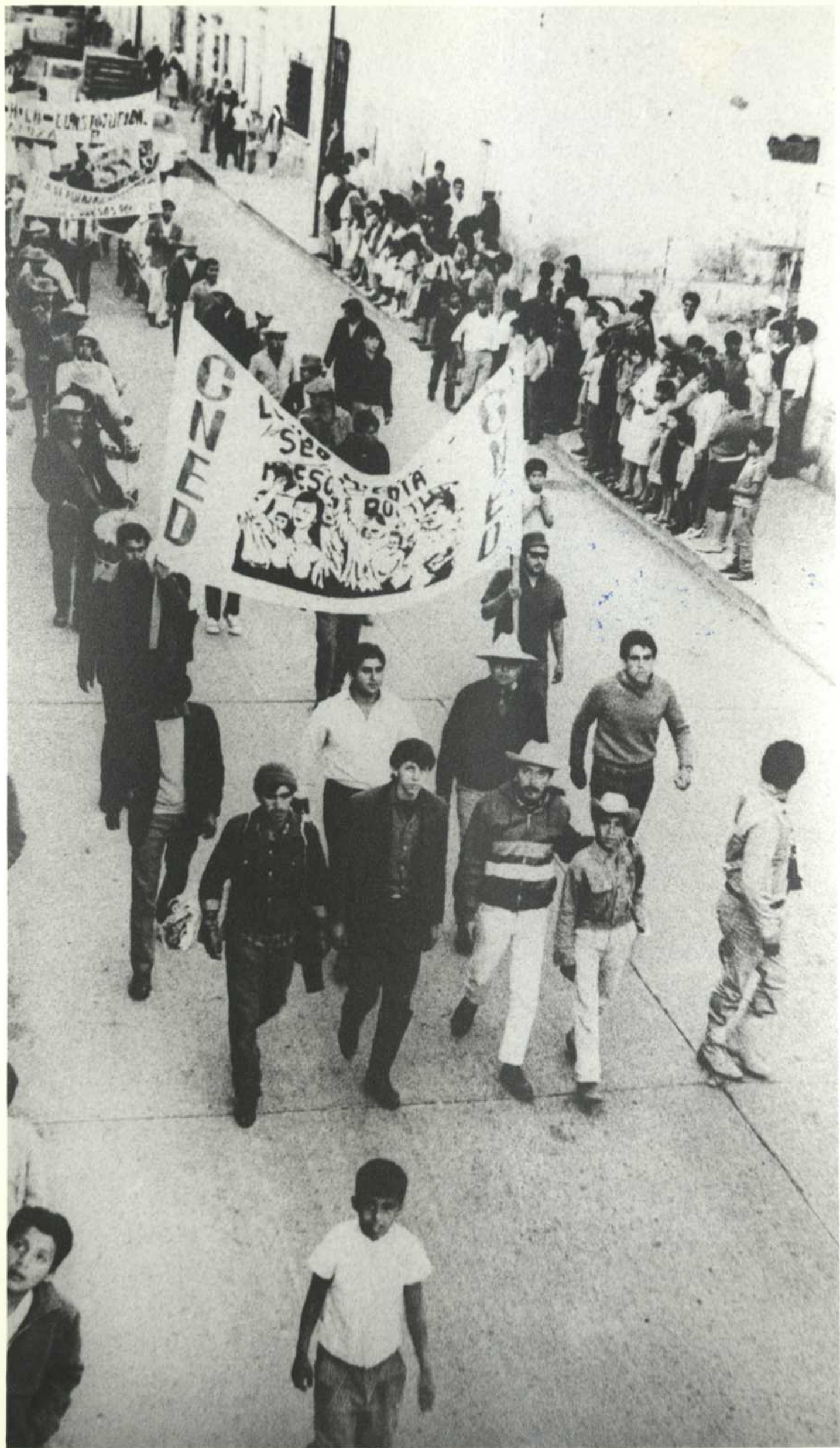
THIS PAPER
MANUFACTURED
BY KODAK

THIS PAPER
MANUFACTURED
BY KODAK

THIS PAPER
MANUFACTURED
BY KODAK

THIS PAPER
MANUFACTURED
BY KODAK

THIS PAPER
MANUFACTURED
BY KODAK



felice/Reuter

Reuter

THIS PAPER
MANUFACTURED
BY KODAK

THIS PAPER
MANUFACTURED
BY KODAK



62095

THIS PAPER
MANUFACTURED
BY KODAK

THIS PAPER
MANUFACTURED
BY KODAK

THIS PAPER
MANUFACTURED
BY KODAK

THIS PAPER
MANUFACTURED
BY KODAK

THIS PAPER
MANUFACTURED
BY KODAK

THIS PAPER
MANUFACTURED
BY KODAK

THIS PAPER
MANUFACTURED
BY KODAK

THIS PAPER
MANUFACTURED
BY KODAK

THIS PAPER
MANUFACTURED
BY KODAK

THIS PAPER
MANUFACTURED
BY KODAK

THIS PAPER
MANUFACTURED
BY KODAK



62096

Feb 20/68



BUZACO HUAMANTLA.



Feb 20/68

62097



Repetir

PAPER
ACTURED
KODAK

THIS PAPER
MANUFACTURED
BY KODAK

THIS PAPER
MANUFACTURED
BY KODAK

THIS PAPER
MANUFACTURED
BY KODAK

THIS PAPER
MANUFACTURED
BY KODAK

THIS PAPER
MANUFACTURED
BY KODAK

THIS PAPER
MANUFACTURED
BY KODAK

THIS PAPER
MANUFACTURED
BY KODAK

THIS PAPER
MANUFACTURED
BY KODAK

THIS PAPER
MANUFACTURED
BY KODAK

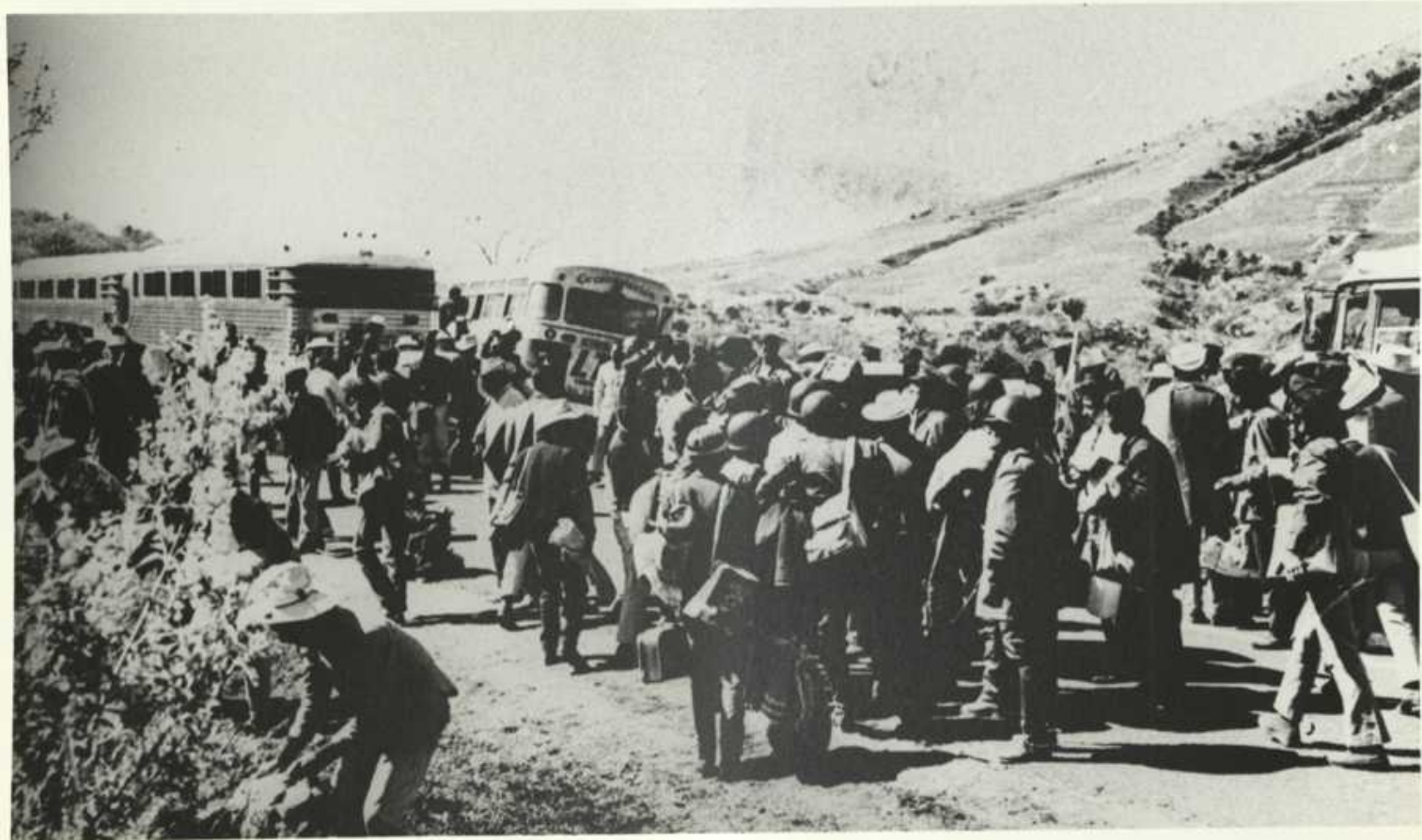
PAPER
ACTURED
KODAK

THIS PAPER
MANUFACTURED
BY KODAK

THIS PAPER
MANUFACTURED
BY KODAK

THIS PAPER
MANUFACTURED
BY KODAK

THIS PAPER
MANUFACTURED
BY KODAK



Feb 20 1968

62098

COMMISSION ESPECIAL DEL 93



THIS PAPER
MANUFACTURED
BY KODAK

THIS PAPER
MANUFACTURED
BY KODAK

THIS PAPER
MANUFACTURED
BY KODAK

THIS PAPER
MANUFACTURED
BY KODAK

PAPER
ACTURED
KODAK

THIS PAPER
MANUFACTURED
BY KODAK

THIS PAPER
MANUFACTURED
BY KODAK

THIS PAPER
MANUFACTURED
BY KODAK

THIS PAPER
MANUFACTURED
BY KODAK

THIS PAPER
MANUFACTURED
BY KODAK

MA
BY

MA
BY

MA
BY

MA
BY



Feb 20/68

62099

MANUFACTURED BY KODAK THIS PAPER

MANUFACTURED BY KODAK THIS PAPER

MANUFACTURED BY KODAK THIS PAPER

MANUFACTURED BY KODAK THIS PAPER

MANUFACTURED BY KODAK THIS PAPER

MANUFACTURED BY KODAK THIS PAPER

MANUFACTURED BY KODAK THIS PAPER

MANUFACTURED BY KODAK THIS PAPER

MANUFACTURED BY KODAK THIS PAPER

MANUFACTURED BY KODAK THIS PAPER

MANUFACTURED BY KODAK THIS PAPER

MANUFACTURED BY KODAK THIS PAPER

MANUFACTURED BY KODAK THIS PAPER

MANUFACTURED BY KODAK THIS PAPER

MANUFACTURED BY KODAK THIS PAPER



febrero/68

22109



COMISION ESPECIAL DLE 68



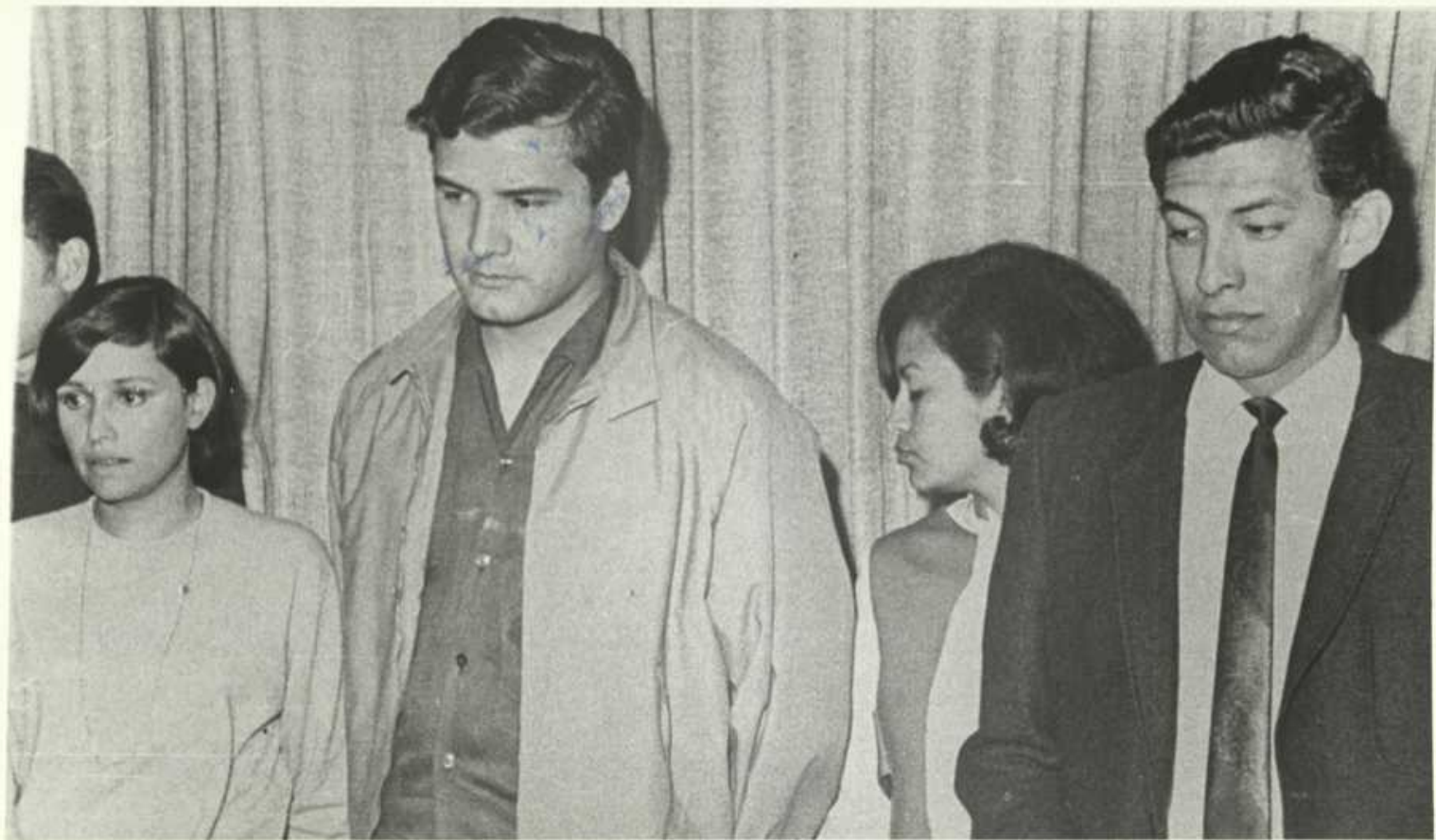
1/ agosto/68

4-12

62101



COMISION ESPECIAL DEL 68



62102

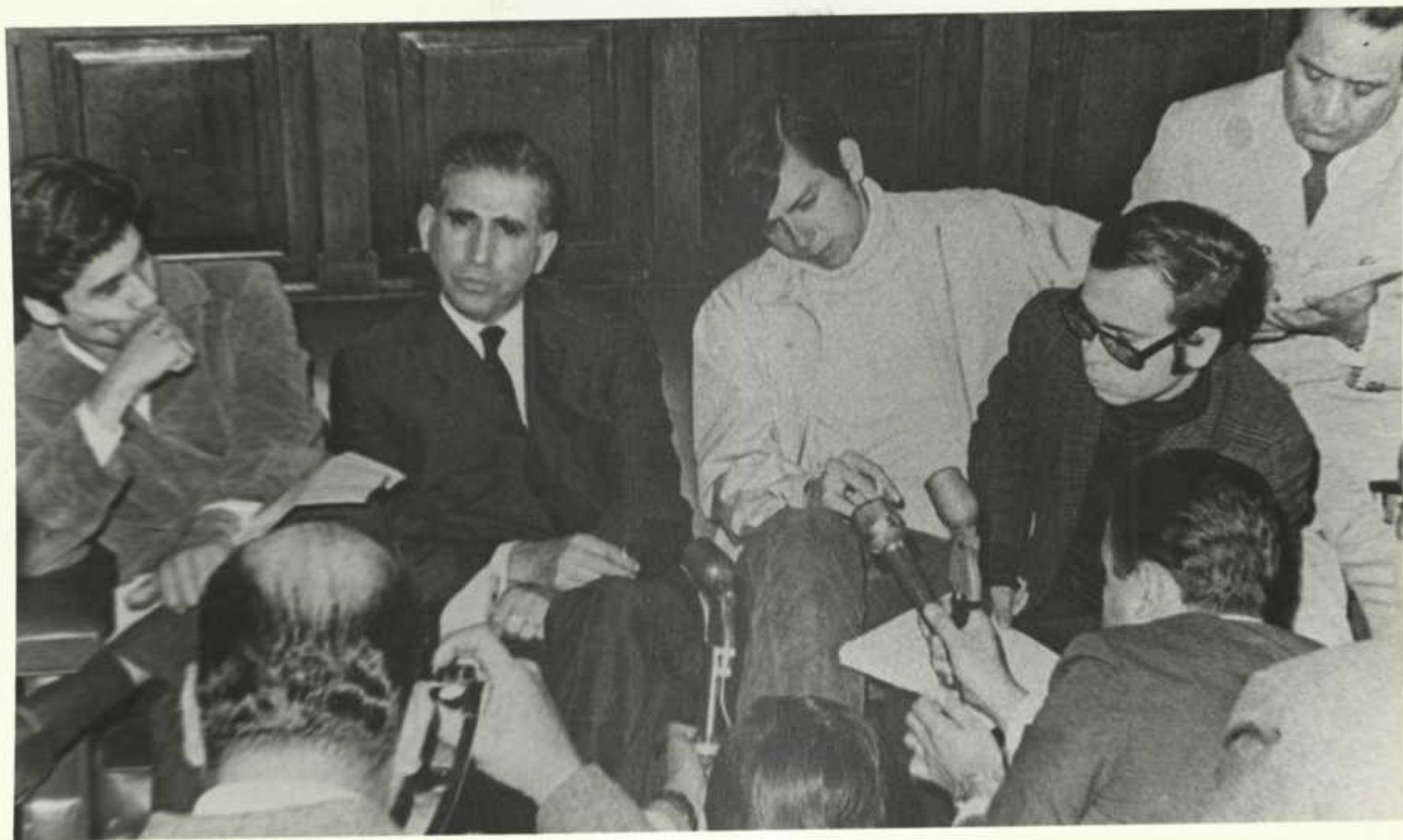
Aspecto parcial de la comparecencia de prensa efectuada
el día de la fecha, en la Procuraduría del Distrito.

En el centro y de chamarrá, Ricardo Pama Montes,
presidente de la Sociedad de alumnos de la facultad
de Comercio, de la UNAM.

México, D.F. 5 de Noviembre de 1968.



COMISION ESPECIAL DEL 68



62103

Aspecto parcial de la conferencia de prensa efectuada el día de la fecha en la Procuraduría General de la República, con el Sr. Julio Sánchez Vargas.



COMISION ESPECIAL DEL 68

México, D.F., 5 de noviembre de 1968.