

FOLIOS 61329-61338

FOLIOS 10

DOCUMENTO: \_\_\_\_\_

FOLIOS: 61329 - 61338

FOLIOS FALTANTES: NINGUNO

OBSERVACIONES: \_\_\_\_\_  
\_\_\_\_\_  
\_\_\_\_\_



2

THIS PAPER  
MANUFACTURED  
BY KODAK

THIS PAPER  
MANUFACTURED  
BY KODAK

THIS PAPER  
MANUFACTURED  
BY KODAK

THIS PAPER  
MANUFACTURED  
BY KODAK

THIS PAPER  
MANUFACTURED  
BY KODAK

THIS PAPER  
MANUFACTURED  
BY KODAK

61329

THIS PAPER  
MANUFACTURED  
BY KODAK

THIS PAPER  
MANUFACTURED  
BY KODAK



COMISION ESPECIAL DEL 88

THIS PAPER  
MANUFACTURED  
BY KODAK

THIS PAPER  
MANUFACTURED  
BY KODAK

THIS PAPER  
MANUFACTURED  
BY KODAK

THIS PAPER  
MANUFACTURED  
BY KODAK

3



9-7

61330



COMISION ESPECIAL DE. 3

A 60

la



7

61331



2-22

*[Handwritten signature]*





NACIMIENTO-DE-UNPRESIDENTE



NACE UNABESTIA EN AQUILES SERDAN, PUE

7

THIS PAPER  
MANUFACTURED  
BY KODAK

THIS PAPER  
MANUFACTURED  
BY KODAK

THIS PAPER  
MANUFACTURED  
BY KODAK

THIS PAPER  
MANUFACTURED  
BY KODAK

THIS PAPER  
MANUFACTURED  
BY KODAK

61332



COMISION ESPECIAL DEL 68

THIS PAPER  
MANUFACTURED  
BY KODAK

THIS PAPER  
MANUFACTURED  
BY KODAK

THIS PAPER  
MANUFACTURED  
BY KODAK

THIS PAPER  
MANUFACTURED  
BY KODAK

9  
t-11

THIS PAPER  
MANUFACTURED  
BY KODAK

THIS PAPER  
MANUFACTURED  
BY KODAK

THIS PAPER  
MANUFACTURED  
BY KODAK

THIS PAPER  
MANUFACTURED  
BY KODAK

THIS PAPER  
MANUFACTURED  
BY KODAK

Da



31-8

J

61833



COMISION ESPECIAL DEL 61

A 60

Ja



THIS PAPER  
MANUFACTURED  
BY KODAK

THIS PAPER  
MANUFACTURED  
BY KODAK

THIS PAPER  
MANUFACTURED  
BY KODAK

THIS PAPER  
MANUFACTURED  
BY KODAK

5-8

61334



COMISION ESPECIAL DEL 68

8

De



3-8

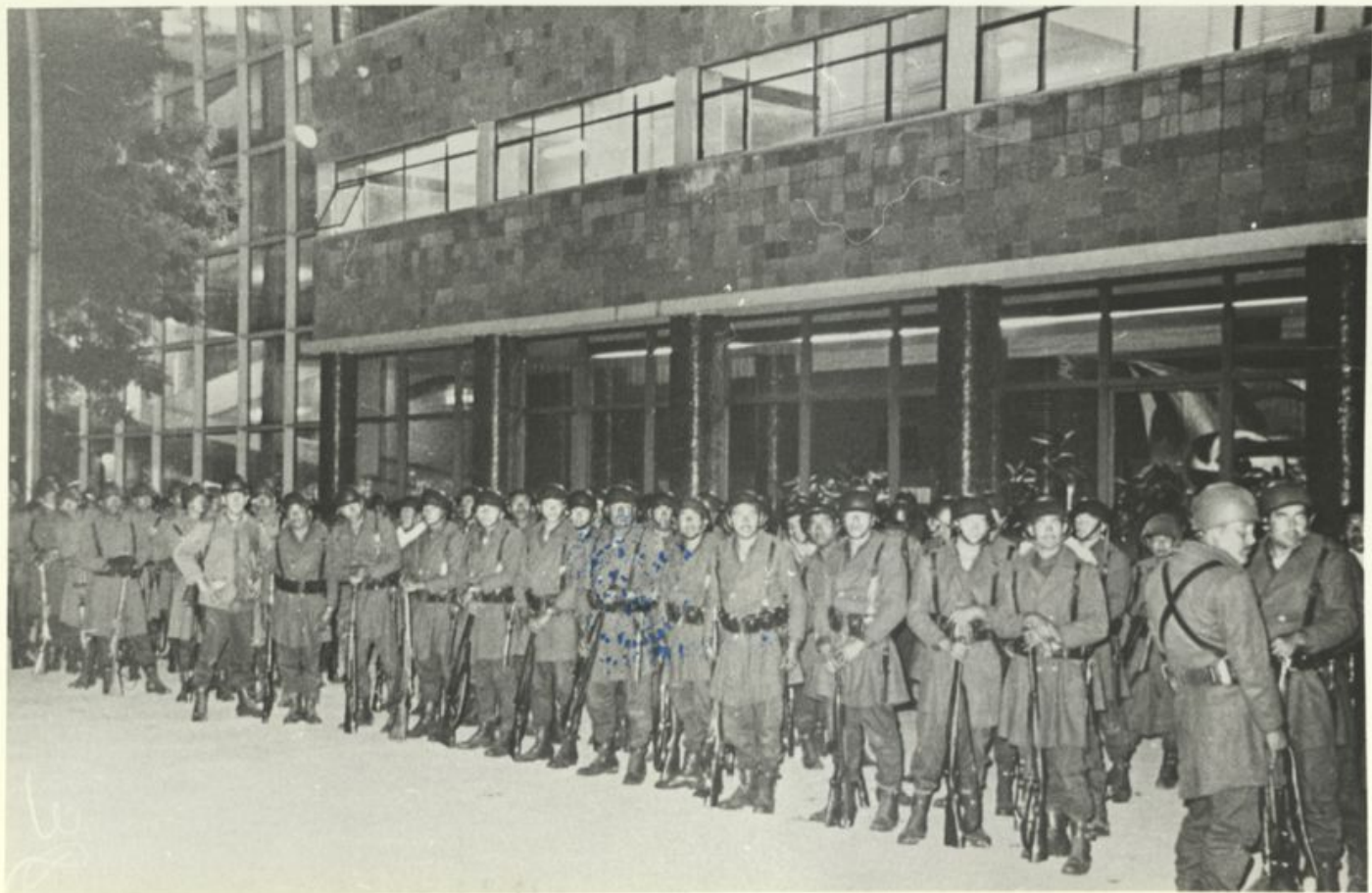
61335



ESPECIAL DEL 68

Pa





00

Carco de Santo Tomás

Miembros del Ejército frente al edificio  
escolar del Carco de Santo Tomás.

23/12/68

61336



COMISION ESPECIAL DEL 68

1-51

je



27-8

61337



COMISION ESPECIAL DEL 68

AGN

8

De



25/1x/88

Casa de Santa Teresita

Elementos del Espirito continúan a una persona  
no identificada

61338



COMISION ESPECIAL DEL BI

8-81

82